

**Product Name: C/EBP  $\alpha$  (phospho Thr226) Rabbit Polyclonal Antibody****Catalog #: APRab04339**

For research use only.

**Summary**

<b>Description</b>	Rabbit polyclonal Antibody
<b>Host</b>	Rabbit
<b>Application</b>	WB,ELISA
<b>Reactivity</b>	Human,Mouse,Rat,Monkey
<b>Conjugation</b>	Unconjugated
<b>Modification</b>	Phosphorylated
<b>Isotype</b>	IgG
<b>Clonality</b>	Polyclonal
<b>Form</b>	Liquid
<b>Concentration</b>	1mg/ml
<b>Storage</b>	Aliquot and store at -20°C (valid for 12 months). Avoid freeze/thaw cycles.
<b>Shipping</b>	Ice bags
<b>Buffer</b>	Liquid in PBS containing 50% glycerol, 0.5% protective protein and 0.02% New type preservative N.
<b>Purification</b>	Affinity purification

**Application**

<b>Dilution Ratio</b>	WB 1:500-1:2000,ELISA 1:5000-1:20000
<b>Molecular Weight</b>	42,also have 30kDa isform

**Antigen Information**

<b>Gene Name</b>	CEBPA
<b>Alternative Names</b>	CEBPA; CCAAT/enhancer-binding protein alpha; C/EBP alpha
<b>Gene ID</b>	1050.0
<b>SwissProt ID</b>	P49715
<b>Immunogen</b>	The antiserum was produced against synthesized peptide derived from human C/EBP-alpha around the phosphorylation site of Thr226. AA range:192-241

**Background**

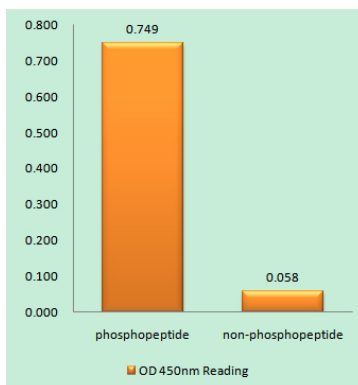
This intronless gene encodes a transcription factor that contains a basic leucine zipper (bZIP) domain and recognizes the

CCAAT motif in the promoters of target genes. The encoded protein functions in homodimers and also heterodimers with CCAAT/enhancer-binding proteins beta and gamma. Activity of this protein can modulate the expression of genes involved in cell cycle regulation as well as in body weight homeostasis. Mutation of this gene is associated with acute myeloid leukemia. The use of alternative in-frame non-AUG (GUG) and AUG start codons results in protein isoforms with different lengths. Differential translation initiation is mediated by an out-of-frame, upstream open reading frame which is located between the GUG and the first AUG start codons. [provided by RefSeq, Dec 2013],function:C/EBP is a DNA-binding protein that recognizes two different motifs: the CCAAT homology common to many promoters and the enhanced core homology common to many enhancers.,similarity:Belongs to the bZIP family.,similarity:Belongs to the bZIP family. C/EBP subfamily.,similarity:Contains 1 bZIP domain.,subunit:Binds DNA as a dimer and can form stable heterodimers with C/EBP beta and gamma. Interacts with UBN1. Interacts with HBV protein X,

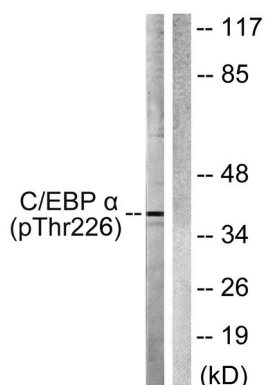
## Research Area

Pathways in cancer;Acute myeloid leukemia;

## Image Data



Enzyme-Linked Immunosorbent Assay ( Phospho-ELISA ) for Immunogen Phosphopeptide (Phospho-left) and Non-Phosphopeptide (Phospho-right) , using C/EBP-alpha (Phospho-Thr226) Antibody



Western blot analysis of lysates from COS7 cells treated with EGF 200ng/ml 30' , using C/EBP-alpha (Phospho-Thr226) Antibody. The lane on the right is blocked with the phospho peptide.