

Product Name: Blk (phospho Tyr501) Rabbit Polyclonal Antibody**Catalog #: APRab04322**

For research use only.

Summary

Description	Rabbit polyclonal Antibody
Host	Rabbit
Application	IHC, ICC/IF, ELISA
Reactivity	Human, Mouse, Rat
Conjugation	Unconjugated
Modification	Phosphorylated
Isotype	IgG
Clonality	Polyclonal
Form	Liquid
Concentration	1mg/ml
Storage	Aliquot and store at -20°C (valid for 12 months). Avoid freeze/thaw cycles.
Shipping	Ice bags
Buffer	Liquid in PBS containing 50% glycerol, 0.5% protective protein and 0.02% New type preservative N.
Purification	Affinity purification

Application

Dilution Ratio IHC 1:100-1:300, ICC/IF 1:50-1:200, ELISA 1:10000-1:20000

Molecular Weight

Antigen Information

Gene Name	BLK
Alternative Names	BLK; Tyrosine-protein kinase Blk; B lymphocyte kinase; p55-Blk
Gene ID	640.0
SwissProt ID	P51451
Immunogen	The antiserum was produced against synthesized peptide derived from human BLK around the phosphorylation site of Tyr501. AA range:456-505

Background

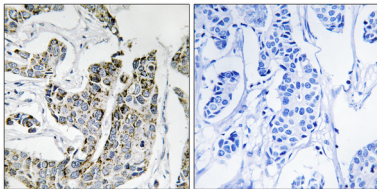
This gene encodes a nonreceptor tyrosine-kinase of the src family of proto-oncogenes that are typically involved in cell

proliferation and differentiation. The protein has a role in B-cell receptor signaling and B-cell development. The protein also stimulates insulin synthesis and secretion in response to glucose and enhances the expression of several pancreatic beta-cell transcription factors. [provided by RefSeq, Aug 2010],catalytic activity:ATP + a [protein]-L-tyrosine = ADP + a [protein]-L-tyrosine phosphate.,function:May function in a signal transduction pathway that is restricted to B-lymphoid cells.,similarity:Belongs to the protein kinase superfamily. Tyr protein kinase family. SRC subfamily.,similarity:Contains 1 protein kinase domain.,similarity:Contains 1 SH2 domain.,similarity:Contains 1 SH3 domain.,

Research Area

Jak-STAT signaling pathway

Image Data



Immunohistochemistry analysis of paraffin-embedded human breast carcinoma, using BLK (Phospho-Tyr501) Antibody. The picture on the right is blocked with the phospho peptide.