

---

**Product Name: Bcr (phospho Tyr360) Rabbit Polyclonal Antibody****Catalog #: APRab04315**

For research use only.

**Summary**

<b>Description</b>	Rabbit polyclonal Antibody
<b>Host</b>	Rabbit
<b>Application</b>	WB,IHC,ICC/IF,ELISA
<b>Reactivity</b>	Human,Mouse,Monkey
<b>Conjugation</b>	Unconjugated
<b>Modification</b>	Phosphorylated
<b>Isotype</b>	IgG
<b>Clonality</b>	Polyclonal
<b>Form</b>	Liquid
<b>Concentration</b>	1mg/ml
<b>Storage</b>	Aliquot and store at -20°C (valid for 12 months). Avoid freeze/thaw cycles.
<b>Shipping</b>	Ice bags
<b>Buffer</b>	Liquid in PBS containing 50% glycerol, 0.5% protective protein and 0.02% New type preservative N.
<b>Purification</b>	Affinity purification

**Application**

<b>Dilution Ratio</b>	WB 1:500-1:2000,IHC 1:100-1:300,ICC/IF 1:200-1:1000,ELISA 1:20000-1:40000
<b>Molecular Weight</b>	142kDa

**Antigen Information**

<b>Gene Name</b>	BCR
<b>Alternative Names</b>	BCR; BCR1; D22S11; Breakpoint cluster region protein; Renal carcinoma antigen NY-REN-26
<b>Gene ID</b>	613.0
<b>SwissProt ID</b>	P11274
<b>Immunogen</b>	The antiserum was produced against synthesized peptide derived from human Bcr around the phosphorylation site of Tyr360. AA range:331-380

**Background**

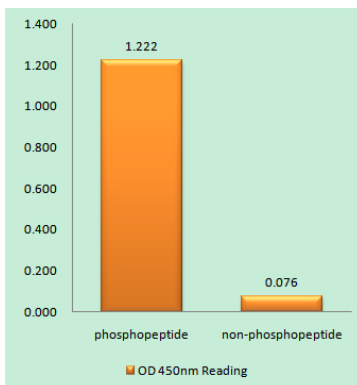
A reciprocal translocation between chromosomes 22 and 9 produces the Philadelphia chromosome, which is often found in

patients with chronic myelogenous leukemia. The chromosome 22 breakpoint for this translocation is located within the BCR gene. The translocation produces a fusion protein which is encoded by sequence from both BCR and ABL, the gene at the chromosome 9 breakpoint. Although the BCR-ABL fusion protein has been extensively studied, the function of the normal BCR gene product is not clear. The protein has serine/threonine kinase activity and is a GTPase-activating protein for p21rac. Two transcript variants encoding different isoforms have been found for this gene. [provided by RefSeq, Jul 2008],catalytic activity:ATP + a protein = ADP + a phosphoprotein.,disease:A chromosomal aberration involving BCR is a cause of chronic myeloid leukemia (CML) [MIM:608232]. Translocation t(9;22)(q34;q11) with ABL1. The translocation produces a BCR-ABL found also in acute myeloid leukemia (AML) and acute lymphoblastic leukemia (ALL),.domain:The DH domain is involved in interaction with CCPG1.,.domain:The region involved in binding to ABL1 SH2-domain is rich in serine residues and needs to be Ser/Thr phosphorylated prior to SH2 binding. This region is essential for the activation of the ABL1 tyrosine kinase and transforming potential of the chimeric BCR-ABL oncogene.,function:GTPase-activating protein for RAC1 and CDC42. Promotes the exchange of RAC or CDC42-bound GDP by GTP, thereby activating them. Displays serine/threonine kinase activity.,PTM:Autophosphorylated.,similarity:Contains 1 C2 domain.,similarity:Contains 1 DH (DBL-homology) domain.,similarity:Contains 1 PH domain.,similarity:Contains 1 Rho-GAP domain.,subunit:Homotetramer. Interacts with PDZK1. May interact with CCPG1.,

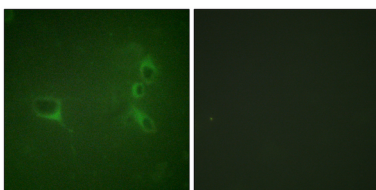
## Research Area

Pathways in cancer;Chronic myeloid leukemia;

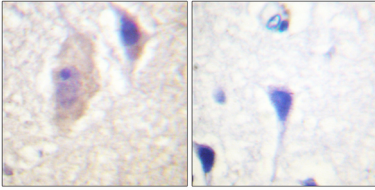
## Image Data



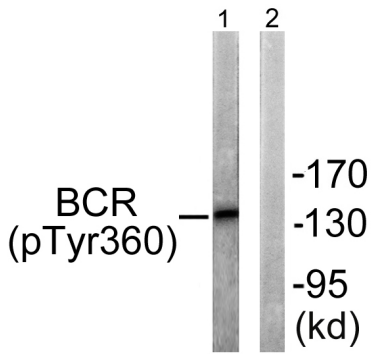
Enzyme-Linked Immunosorbent Assay ( Phospho-ELISA ) for Immunogen Phosphopeptide (Phospho-left) and Non-Phosphopeptide (Phospho-right) , using Bcr (Phospho-Tyr360) Antibody



Immunofluorescence analysis of NIH/3T3 cells, using Bcr (Phospho-Tyr360) Antibody. The picture on the right is blocked with the phospho peptide.



Immunohistochemistry analysis of paraffin-embedded human brain, using Bcr (Phospho-Tyr360) Antibody. The picture on the right is blocked with the phospho peptide.



Western blot analysis of lysates from COS7 cells, using Bcr (Phospho-Tyr360) Antibody. The lane on the right is blocked with the phospho peptide.