
Product Name: Phospho-Bad (Ser91) Rabbit Polyclonal Antibody**Catalog #: APRab04298**

For research use only.

Summary

Description	Rabbit polyclonal Antibody
Host	Rabbit
Application	WB,IHC,ICC/IF,ELISA
Reactivity	Human,Mouse,Rat,Monkey
Conjugation	Unconjugated
Modification	Phosphorylated
Isotype	IgG
Clonality	Polyclonal
Form	Liquid
Concentration	1mg/ml
Storage	Aliquot and store at -20°C (valid for 12 months). Avoid freeze/thaw cycles.
Shipping	Ice bags
Buffer	Liquid in PBS containing 50% glycerol, 0.5% protective protein and 0.02% New type preservative N.
Purification	Affinity purification

Application

Dilution Ratio	WB 1:500-1:2000,IHC 1:100-1:300,ICC/IF 1:200-1:1000,ELISA 1:5000-1:20000
Molecular Weight	22kDa

Antigen Information

Gene Name	BAD
Alternative Names	BAD; BBC6; BCL2L8; Bcl2 antagonist of cell death; BAD; Bcl-2-binding component 6; Bcl-2-like protein 8; Bcl2-L-8; Bcl-XL/Bcl-2-associated death promoter
Gene ID	572.0
SwissProt ID	Q92934
Immunogen	The antiserum was produced against synthesized peptide derived from human BAD around the phosphorylation site of Ser91/128. AA range:61-110

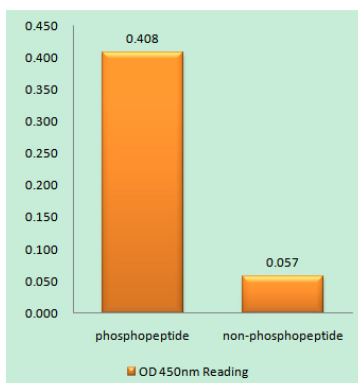
Background

The protein encoded by this gene is a member of the BCL-2 family. BCL-2 family members are known to be regulators of programmed cell death. This protein positively regulates cell apoptosis by forming heterodimers with BCL-xL and BCL-2, and reversing their death repressor activity. Proapoptotic activity of this protein is regulated through its phosphorylation. Protein kinases AKT and MAP kinase, as well as protein phosphatase calcineurin were found to be involved in the regulation of this protein. Alternative splicing of this gene results in two transcript variants which encode the same isoform. [provided by RefSeq, Jul 2008],domain:Intact BH3 motif is required by BIK, BID, BAK, BAD and BAX for their pro-apoptotic activity and for their interaction with anti-apoptotic members of the Bcl-2 family.,function:Promotes cell death. Successfully competes for the binding to Bcl-X(L), Bcl-2 and Bcl-W, thereby affecting the level of heterodimerization of these proteins with BAX. Can reverse the death repressor activity of Bcl-X(L), but not that of Bcl-2 (By similarity). Appears to act as a link between growth factor receptor signaling and the apoptotic pathways.,online information:Bcl 2-associated death promoter entry,PTM:Phosphorylated on one or more of Ser-75, Ser-99, Ser-118 and Ser-134 in response to survival stimuli, which blocks its pro-apoptotic activity. Phosphorylation on Ser-99 or Ser-75 promotes heterodimerization with 14-3-3 proteins. This interaction then facilitates the phosphorylation at Ser-118, a site within the BH3 motif, leading to the release of Bcl-X(L) and the promotion of cell survival. Ser-99 is the major site of AKT/PKB phosphorylation, Ser-118 the major site of protein kinase A (CAPK) phosphorylation.,similarity:Belongs to the Bcl-2 family.,subcellular location:Upon phosphorylation, locates to the cytoplasm.,subunit:Forms heterodimers with the anti-apoptotic proteins, Bcl-X(L), Bcl-2 and Bcl-W. Also binds protein S100A10 (By similarity). The Ser-75/Ser-99 phosphorylated form binds 14-3-3 proteins.,tissue specificity:Expressed in a wide variety of tissues.,

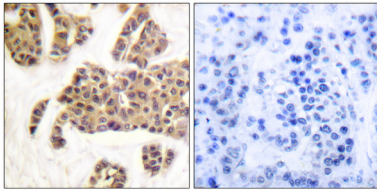
Research Area

ErbB_HER;Apoptosis_Inhibition;Apoptosis_Mitochondrial;Apoptosis_Overview;VEGF;Focal adhesion;Neurotrophin;Insulin_Receptor;Alzheimer's disease;Amyotrophic lateral sclerosis (ALS);Pathways in cancer;Colorectal cancer;Pancreatic cancer;Endometrial cancer;Prostate cancer;Melanoma;Chronic myeloid leukemia;Acute myeloid leukemia;Non-small cell lung cancer;

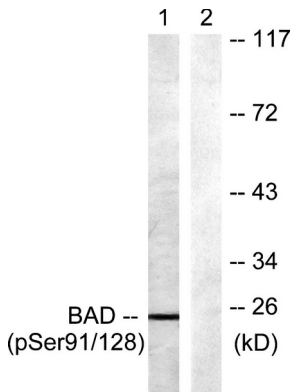
Image Data



Enzyme-Linked Immunosorbent Assay (Phospho-ELISA) for Immunogen Phosphopeptide (Phospho-left) and Non-Phosphopeptide (Phospho-right) , using BAD (Phospho-Ser91/128) Antibody



Immunohistochemistry analysis of paraffin-embedded human breast carcinoma, using BAD (Phospho-Ser91/128) Antibody. The picture on the right is blocked with the phospho peptide.



Western blot analysis of lysates from COS7 cells treated with TNF- α 20ng/ml + Calyculin A 50nM 5', using BAD (Phospho-Ser91/128) Antibody. The lane on the right is blocked with the phospho peptide.