

---

**Product Name: APC1 (phospho Ser688) Rabbit Polyclonal Antibody****Catalog #: APRab04245**

For research use only.

**Summary**

<b>Description</b>	Rabbit polyclonal Antibody
<b>Host</b>	Rabbit
<b>Application</b>	WB,IHC,ICC/IF,ELISA
<b>Reactivity</b>	Human,Mouse,Rat
<b>Conjugation</b>	Unconjugated
<b>Modification</b>	Phosphorylated
<b>Isotype</b>	IgG
<b>Clonality</b>	Polyclonal
<b>Form</b>	Liquid
<b>Concentration</b>	1mg/ml
<b>Storage</b>	Aliquot and store at -20°C (valid for 12 months). Avoid freeze/thaw cycles.
<b>Shipping</b>	Ice bags
<b>Buffer</b>	Liquid in PBS containing 50% glycerol, 0.5% protective protein and 0.02% New type preservative N.
<b>Purification</b>	Affinity purification

**Application**

**Dilution Ratio** WB 1:500-1:2000,IHC 1:100-1:300,ICC/IF 1:200-1:1000,ELISA 1:5000-1:20000

**Molecular Weight**

**Antigen Information**

<b>Gene Name</b>	ANAPC1
<b>Alternative Names</b>	ANAPC1; TSG24; Anaphase-promoting complex subunit 1; APC1; Cyclosome subunit 1; Mitotic checkpoint regulator; Testis-specific gene 24 protein
<b>Gene ID</b>	64682.0
<b>SwissProt ID</b>	Q9H1A4
<b>Immunogen</b>	The antiserum was produced against synthesized peptide derived from human APC1 around the phosphorylation site of Ser688. AA range:654-703

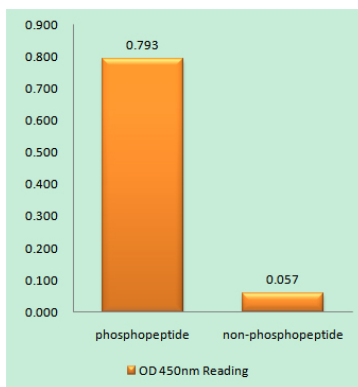
**Background**

This gene encodes a subunit of the anaphase-promoting complex. This complex is an E3 ubiquitin ligase that regulates progression through the metaphase to anaphase portion of the cell cycle by ubiquitinating proteins which targets them for degradation. [provided by RefSeq, Dec 2011],function:Component of the anaphase promoting complex/cyclosome (APC/C), a cell cycle-regulated E3 ubiquitin ligase that controls progression through mitosis and the G1 phase of the cell cycle.,pathway:Protein modification; protein ubiquitination.,PTM:Phosphorylated. Phosphorylation on Ser-355 occurs specifically during mitosis.,similarity:Belongs to the APC1 family.,similarity:Contains 4 PC repeats.,subunit:The APC/C is composed of at least 11 subunits.,

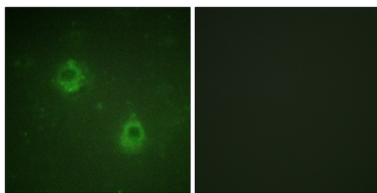
## Research Area

Cell\_Cycle\_G1S;Cell\_Cycle\_G2M\_DNA;Oocyte meiosis;Ubiquitin mediated proteolysis;Progesterone-mediated oocyte maturation;

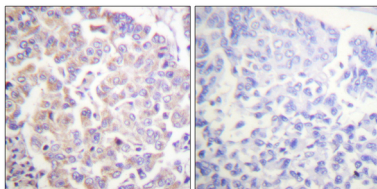
## Image Data



Enzyme-Linked Immunosorbent Assay ( Phospho-ELISA ) for Immunogen Phosphopeptide (Phospho-left) and Non-Phosphopeptide (Phospho-right) , using APC1 (Phospho-Ser688) Antibody



Immunofluorescence analysis of COS7 cells, using APC1 ( Phospho-Ser688 ) Antibody. The picture on the right is blocked with the phospho peptide.



Immunohistochemistry analysis of paraffin-embedded human breast carcinoma, using APC1 (Phospho-Ser688) Antibody. The picture on the right is blocked with the phospho peptide.