
Product Name: Phospho-AP-1 (Thr93) Rabbit Polyclonal Antibody**Catalog #: APRab04239**

For research use only.

Summary

Description	Rabbit polyclonal Antibody
Host	Rabbit
Application	WB,IHC,ICC/IF,ELISA,IP
Reactivity	Human,Mouse,Rat
Conjugation	Unconjugated
Modification	Phosphorylated
Isotype	IgG
Clonality	Polyclonal
Form	Liquid
Concentration	1mg/ml
Storage	Aliquot and store at -20°C (valid for 12 months). Avoid freeze/thaw cycles.
Shipping	Ice bags
Buffer	Liquid in PBS containing 50% glycerol, 0.5% protective protein and 0.02% New type preservative N.
Purification	Affinity purification

Application

Dilution Ratio	WB 1:500-1:2000,IHC 1:100-1:300,ICC/IF 1:50-1:200,ELISA 1:10000-1:20000,IP 1:20-1:50
Molecular Weight	39-42kDa

Antigen Information

Gene Name	JUN
Alternative Names	JUN; Transcription factor AP-1; Activator protein 1; AP1; Proto-oncogene c-Jun; V-jun avian sarcoma virus 17 oncogene homolog; p39
Gene ID	3725.0
SwissProt ID	P05412
Immunogen	The antiserum was produced against synthesized peptide derived from human c-Jun around the phosphorylation site of Thr93. AA range:61-110

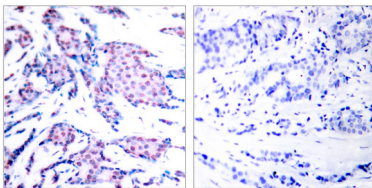
Background

This gene is the putative transforming gene of avian sarcoma virus 17. It encodes a protein which is highly similar to the viral protein, and which interacts directly with specific target DNA sequences to regulate gene expression. This gene is intronless and is mapped to 1p32-p31, a chromosomal region involved in both translocations and deletions in human malignancies. [provided by RefSeq, Jul 2008],function:Transcription factor that recognizes and binds to the enhancer heptamer motif 5'-TGA[CG]TCA-3',PTM:Phosphorylation enhances the transcriptional activity. Phosphorylated by PRKDC.,similarity:Belongs to the bZIP family.,similarity:Belongs to the bZIP family. Jun subfamily.,similarity:Contains 1 bZIP domain.,subunit:Heterodimer with either FOS or BATF3. Interacts with HIVEP3 (By similarity). Interacts with SMAD3/SMAD4 heterodimers. Interacts with MYBBP1A, SPIB and TCF20. Interacts with COPS5; indirectly leading to its phosphorylation. Interacts with DSIPI; this interaction inhibits the binding of active AP1 to its target DNA.,

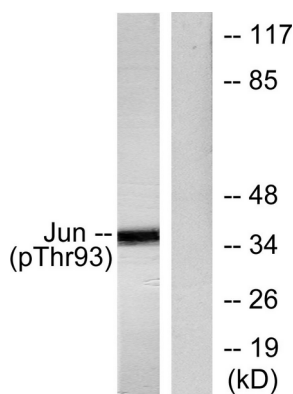
Research Area

MAPK_ERK_Growth;MAPK_G_Protein;ErbB_HER;WNT;WNT-T CELL Focal adhesion;Toll_Like;T_Cell_Receptor;B_Cell_Antigen;Neurotrophin;GnRH;Epithelial cell signaling in Helicobacter pylori infection;Pathways in cancer;Colorectal cancer;Renal cell carcinoma;

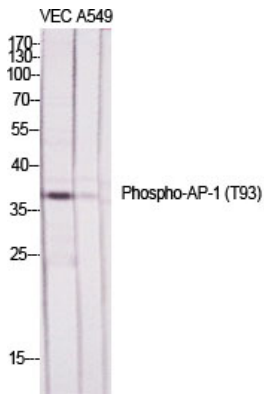
Image Data



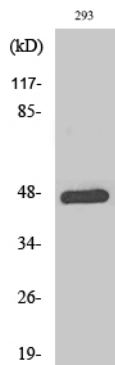
Immunohistochemistry analysis of paraffin-embedded human breast carcinoma, using c-Jun (Phospho-Thr93) Antibody. The picture on the right is blocked with the phospho peptide.



Western blot analysis of lysates from HeLa cells treated with UV, using c-Jun (Phospho-Thr93) Antibody. The lane on the right is blocked with the phospho peptide.



Western Blot analysis of various cells using Phospho-AP-1 (T93) Polyclonal Antibody diluted at 1: 500



Western Blot analysis of 293 cells using Phospho-AP-1 (T93) Polyclonal Antibody diluted at 1: 500