
Product Name: AIP4 (phospho Tyr420) Rabbit Polyclonal Antibody**Catalog #: APRab04206**

For research use only.

Summary

Description	Rabbit polyclonal Antibody
Host	Rabbit
Application	IHC,ICC/IF,ELISA
Reactivity	Human,Mouse
Conjugation	Unconjugated
Modification	Phosphorylated
Isotype	IgG
Clonality	Polyclonal
Form	Liquid
Concentration	1mg/ml
Storage	Aliquot and store at -20°C (valid for 12 months). Avoid freeze/thaw cycles.
Shipping	Ice bags
Buffer	Liquid in PBS containing 50% glycerol, 0.5% protective protein and 0.02% New type preservative N.
Purification	Affinity purification

Application

Dilution Ratio IHC 1:100-1:300,ICC/IF 1:50-1:200,ELISA 1:10000-1:20000

Molecular Weight

Antigen Information

Gene Name	ITCH
Alternative Names	ITCH; E3 ubiquitin-protein ligase Itchy homolog; Itch; Atrophin-1-interacting protein 4; AIP4; NFE2-associated polypeptide 1; NAPP1
Gene ID	83737.0
SwissProt ID	Q96J02
Immunogen	The antiserum was produced against synthesized peptide derived from human ITCH around the phosphorylation site of Tyr420. AA range:386-435

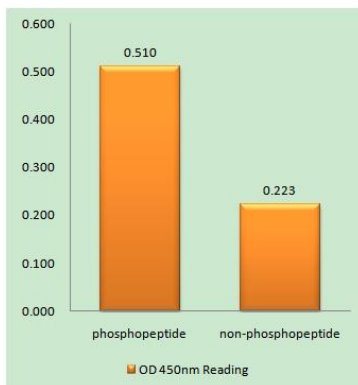
Background

itchy E3 ubiquitin protein ligase(ITCH) Homo sapiens This gene encodes a member of the Nedd4 family of HECT domain E3 ubiquitin ligases. HECT domain E3 ubiquitin ligases transfer ubiquitin from E2 ubiquitin-conjugating enzymes to protein substrates, thus targeting specific proteins for lysosomal degradation. The encoded protein plays a role in multiple cellular processes including erythroid and lymphoid cell differentiation and the regulation of immune responses. Mutations in this gene are a cause of syndromic multisystem autoimmune disease. Alternatively spliced transcript variants encoding multiple isoforms have been observed for this gene. [provided by RefSeq, Mar 2012],function:E3 ubiquitin-protein ligase which accepts ubiquitin from an E2 ubiquitin-conjugating enzyme in the form of a thioester and then directly transfers the ubiquitin to targeted substrates. Regulates the transcriptional activity of several transcription factors, and probably plays an important role in the regulation of immune response.,pathway:Protein modification; protein ubiquitination.,PTM:Phosphorylated on tyrosine residues.,similarity:Contains 1 C2 domain.,similarity:Contains 1 HECT (E6AP-type E3 ubiquitin-protein ligase) domain.,similarity:Contains 4 WW domains.,subunit:Interacts via its WW domains with DRPLA, NFE2 and CBLC. Interacts with Epstein-Barr virus LMP2A. Interacts with NOTCH1, OCLN, JUN and JUNB. Interacts with NDFIP1 in vitro (By similarity). Interacts with ARHGEF7.,tissue specificity:Widely expressed.,

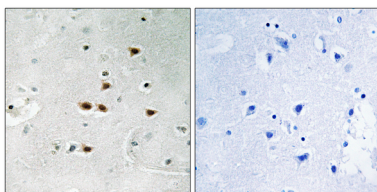
Research Area

Ubiquitin mediated proteolysis;Endocytosis;

Image Data



Enzyme-Linked Immunosorbent Assay (Phospho-ELISA) for Immunogen Phosphopeptide (Phospho-left) and Non-Phosphopeptide (Phospho-right) , using ITCH (Phospho-Tyr420) Antibody



Immunohistochemistry analysis of paraffin-embedded human brain, using ITCH (Phospho-Tyr420) Antibody. The picture on the right is blocked with the phospho peptide.