
Product Name: ACAP1 (phospho Ser554) Rabbit Polyclonal Antibody**Catalog #: APRab04198**

For research use only.

Summary

Description	Rabbit polyclonal Antibody
Host	Rabbit
Application	WB,IHC,ICC/IF,ELISA
Reactivity	Human,Rat,Mouse
Conjugation	Unconjugated
Modification	Phosphorylated
Isotype	IgG
Clonality	Polyclonal
Form	Liquid
Concentration	1mg/ml
Storage	Aliquot and store at -20°C (valid for 12 months). Avoid freeze/thaw cycles.
Shipping	Ice bags
Buffer	Liquid in PBS containing 50% glycerol, 0.5% protective protein and 0.02% New type preservative N.
Purification	Affinity purification

Application

Dilution Ratio WB 1:500-1:2000,IHC 1:100-1:300,ICC/IF 1:50-1:200,ELISA 1:10000-1:40000

Molecular Weight

Antigen Information

Gene Name	ACAP1
Alternative Names	ACAP1; CENTB1; KIAA0050; Arf-GAP with coiled-coil; ANK repeat and PH domain-containing protein 1; Centaurin-beta-1; Cnt-b1
Gene ID	9744.0
SwissProt ID	Q15027
Immunogen	The antiserum was produced against synthesized peptide derived from human Centaurin-beta1 around the phosphorylation site of Ser554. AA range:520-569

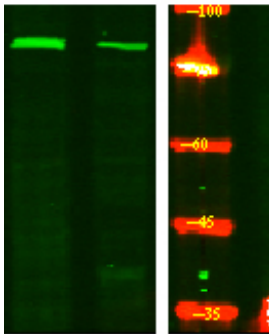
Background

domain:PH domain binds phospholipids including phosphatidic acid, phosphatidylinositol 3-phosphate, phosphatidylinositol 3,5-bisphosphate (PIP2) and phosphatidylinositol 3,4,5-trisphosphate (PIP3). May mediate ACAP1-binding to PIP2 or PIP3 containing membranes.,enzyme regulation:GAP activity stimulated by phosphatidylinositol 4,5-bisphosphate (PIP2) and phosphatidic acid.,function:GTPase-activating protein (GAP) for ADP ribosylation factor 6 (ARF6) required for clathrin-dependent export of proteins from recycling endosomes to trans-Golgi network and cell surface.,miscellaneous:Cells overexpressing ACAP1 show an accumulation of ITGB1 in recycling endosomes and inhibition of stimulation-dependent cell migration. Cells with reduced levels of ACAP1 or AKT1 and AKT2 show inhibition of stimulation-dependent cell migration. Cells overexpressing ACAP1 and PIP5K1C show formation of tubular structures derived from endosomal membranes.,PTM:Phosphorylation at Ser-554 by PKB is required for interaction with ITGB1, export of ITGB1 from recycling endosomes to the cell surface and ITGB1-dependent cell migration.,similarity:Contains 1 Arf-GAP domain.,similarity:Contains 1 BAR domain.,similarity:Contains 1 PH domain.,similarity:Contains 3 ANK repeats.,subunit:Interacts with GTP-bound ARF6. Interacts with third cytoplasmic loop of SLC2A4/GLUT4. Interacts with CLTC. Interacts with GULP1. Forms a complex with GDP-bound ARF6 and GULP1.,tissue specificity:Highest level in lung and spleen. Low level in heart, kidney, liver and pancreas.,domain:PH domain binds phospholipids including phosphatidic acid, phosphatidylinositol 3-phosphate, phosphatidylinositol 3,5-bisphosphate (PIP2) and phosphatidylinositol 3,4,5-trisphosphate (PIP3). May mediate ACAP1-binding to PIP2 or PIP3 containing membranes.,enzyme regulation:GAP activity stimulated by phosphatidylinositol 4,5-bisphosphate (PIP2) and phosphatidic acid.,function:GTPase-activating protein (GAP) for ADP ribosylation factor 6 (ARF6) required for clathrin-dependent export of proteins from recycling endosomes to trans-Golgi network and cell surface.,miscellaneous:Cells overexpressing ACAP1 show an accumulation of ITGB1 in recycling endosomes and inhibition of stimulation-dependent cell migration. Cells with reduced levels of ACAP1 or AKT1 and AKT2 show inhibition of stimulation-dependent cell migration. Cells overexpressing ACAP1 and PIP5K1C show formation of tubular structures derived from endosomal membranes.,PTM:Phosphorylation at Ser-554 by PKB is required for interaction with ITGB1, export of ITGB1 from recycling endosomes to the cell surface and ITGB1-dependent cell migration.,similarity:Contains 1 Arf-GAP domain.,similarity:Contains 1 BAR domain.,similarity:Contains 1 PH domain.,similarity:Contains 3 ANK repeats.,subunit:Interacts with GTP-bound ARF6. Interacts with third cytoplasmic loop of SLC2A4/GLUT4. Interacts with CLTC. Interacts with GULP1. Forms a complex with GDP-bound ARF6 and GULP1.,tissue specificity:Highest level in lung and spleen. Low level in heart, kidney, liver and pancreas.,

Research Area

Endocytosis;

Image Data



Western Blot analysis of HeLa treated or untreated by LPS lysis, using primary antibody at 1:1000 dilution. Secondary antibody was diluted at 1:10000