

**Product Name: PINK1 Rabbit Polyclonal Antibody**  
**Catalog #: APRab04152**



## Summary

<b>Production Name</b>	PINK1 Rabbit Polyclonal Antibody
<b>Description</b>	Rabbit Polyclonal Antibody
<b>Host</b>	Rabbit
<b>Application</b>	WB
<b>Reactivity</b>	Human,Mouse,Rat

## Performance

<b>Conjugation</b>	Unconjugated
<b>Modification</b>	Unmodified
<b>Isotype</b>	IgG
<b>Clonality</b>	Polyclonal
<b>Form</b>	Liquid
<b>Storage</b>	Store at 4°C short term. Aliquot and store at -20°C long term. Avoid freeze/thaw cycles.
<b>Buffer</b>	Liquid in PBS containing 50% glycerol, 0.5% protective protein and 0.02% sodium azide, pH 7.3.
<b>Purification</b>	Affinity Purification

## Immunogen

<b>Gene Name</b>	PINK1
<b>Alternative Names</b>	BRPK; PARK6
<b>Gene ID</b>	65018
<b>SwissProt ID</b>	Q9BXM7.

## Application

<b>Dilution Ratio</b>	WB: 1:500-1:1000
<b>Molecular Weight</b>	Calculated MW: 63 kDa; Observed MW: 63 kDa

## Background

Serine/threonine-protein kinase which protects against mitochondrial dysfunction during cellular stress by phosphorylating

**Product Name: PINK1 Rabbit Polyclonal Antibody**  
**Catalog #: APRab04152**

---

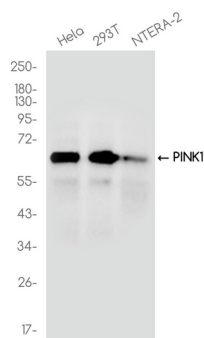


mitochondrial proteins such as PRKN and DNM1L, to coordinate mitochondrial quality control mechanisms that remove and replace dysfunctional mitochondrial components.

## Research Area

Neuroscience

## Image Data



Western blot analysis of PINK1 in various cell lines lysates using PINK1 antibody.

## Note

For research use only.