

## Summary

<b>Production Name</b>	IL-1 beta Rabbit Polyclonal Antibody
<b>Description</b>	Rabbit Polyclonal Antibody
<b>Host</b>	Rabbit
<b>Application</b>	WB
<b>Reactivity</b>	Human,Mouse,Rat

## Performance

<b>Conjugation</b>	Unconjugated
<b>Modification</b>	Unmodified
<b>Isotype</b>	IgG
<b>Clonality</b>	Polyclonal
<b>Form</b>	Liquid
<b>Storage</b>	Store at 4°C short term. Aliquot and store at -20°C long term. Avoid freeze/thaw cycles.
<b>Buffer</b>	Liquid in PBS containing 50% glycerol, 0.5% protective protein and 0.02% sodium azide, pH 7.3.
<b>Purification</b>	Affinity Purification

## Immunogen

<b>Gene Name</b>	IL1B
<b>Alternative Names</b>	IL1B; IL1F2; Interleukin-1 beta; IL-1 beta; Catabolin
<b>Gene ID</b>	3553
<b>SwissProt ID</b>	P01584.

## Application

<b>Dilution Ratio</b>	WB: 1:500-1:1000
<b>Molecular Weight</b>	Calculated MW: 31 kDa; Observed MW: 31 kDa

## Background

**Product Name: IL-1 beta Rabbit Polyclonal Antibody**  
**Catalog #: APRab03854**

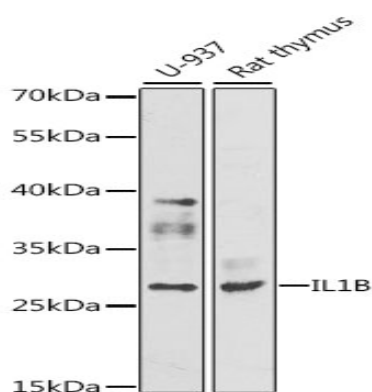


Produced by activated macrophages, IL-1 stimulates thymocyte proliferation by inducing IL-2 release, B-cell maturation and proliferation, and fibroblast growth factor activity. IL-1 proteins are involved in the inflammatory response, being identified as endogenous pyrogens, and are reported to stimulate the release of prostaglandin and collagenase from synovial cells.

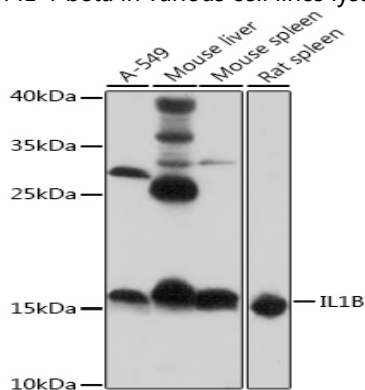
## Research Area

Immunology

## Image Data



Western blot analysis of IL-1 beta in various cell lines lysates using IL-1B antibody.



Western blot analysis of IL-1 beta in various cell lines lysates using IL-1B antibody.

## Note

For research use only.