

Product Name: CD31 Rabbit Polyclonal Antibody
Catalog #: APRab03853

Summary

Production Name	CD31 Rabbit Polyclonal Antibody
Description	Rabbit Polyclonal Antibody
Host	Rabbit
Application	WB,IHC-F,IHC-P,ICC/IF,ELISA
Reactivity	Human,Mouse

Performance

Conjugation	Unconjugated
Modification	Unmodified
Isotype	IgG
Clonality	Polyclonal
Form	Liquid
Storage	Store at 4°C short term. Aliquot and store at -20°C long term. Avoid freeze/thaw cycles.
Buffer	Liquid in PBS containing 50% glycerol, 0.5% protective protein and 0.02% sodium azide, pH 7.3.
Purification	Affinity Purification

Immunogen

Gene Name	PECAM1
Alternative Names	Platelet endothelial cell adhesion molecule; PECAM-1; EndoCAM; GPIIA ⁺ ; PECA1; CD antigen CD31
Gene ID	5175
SwissProt ID	P16284.

Application

Dilution Ratio	WB: 1:500-1:1000 IHC: 1:50-1:100 IF: 1:50-1:200 ELISA: 1:10000
Molecular Weight	Calculated MW: 83 kDa; Observed MW: 130-140 kDa

Product Name: CD31 Rabbit Polyclonal Antibody
Catalog #: APRab03853



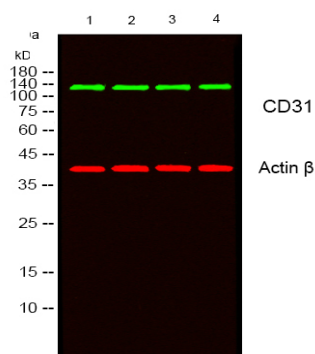
Background

PECAM-1 a cell adhesion molecule expressed on platelets and at endothelial cell intercellular junctions. Plays a role in modulation of integrin-mediated cell adhesion, transendothelial migration, angiogenesis, apoptosis, cell migration, negative regulation of immune cell signaling, autoimmunity, macrophage phagocytosis, IgE-mediated anaphylaxis and thrombosis. Undergoes alternative splicing, generating multiple isoforms in vascular beds of various tissues.

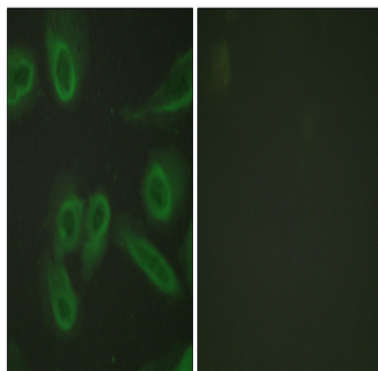
Research Area

Cardiovascular

Image Data

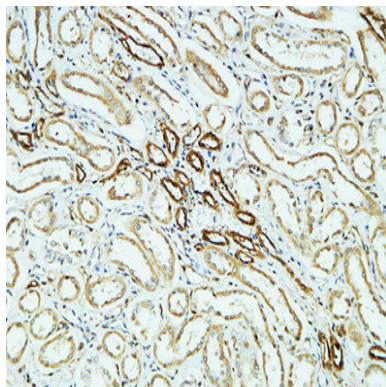


Western blot analysis of CD31 in HepG2, K562, L929, mouse brain lysates using CD31 antibody.



Immunofluorescence analysis of CD31 in HeLa using CD31 antibody. The picture on the right is blocked using synthesized peptide.

Product Name: CD31 Rabbit Polyclonal Antibody
Catalog #: APRab03853



Immunohistochemistry analysis of paraffin-embedded CD31 in paraffin-embedded Human kidney using CD31 antibody.
High-pressure and temperature Sodium Citrate pH 6.0 was used for antigen retrieval.

Note

For research use only.