

Product Name: c-Kit Rabbit Polyclonal Antibody**Catalog #: APRab03852**

For research use only.

Summary

Description	Rabbit polyclonal Antibody
Host	Rabbit
Application	WB,IHC,ICC/IF,ELISA
Reactivity	Human,Mouse,Rat,Monkey
Conjugation	Unconjugated
Modification	Unmodified
Isotype	IgG
Clonality	Polyclonal
Form	Liquid
Concentration	1mg/ml
Storage	Aliquot and store at -20°C (valid for 12 months). Avoid freeze/thaw cycles.
Shipping	Ice bags
Buffer	Liquid in PBS containing 50% glycerol, 0.5% protective protein and 0.02% sodium azide, pH 7.3.
Purification	Affinity Chromatography

Application

Dilution Ratio	WB 1:500-1:1000,IHC 1:50-1:100,ICC/IF 1:50-1:200,ELISA 1:5000-1:20000
Molecular Weight	Calculated MW: 110 kDa; Observed MW: 120 kDa

Antigen Information

Gene Name	KIT
Alternative Names	KIT; SCFR; Mast/stem cell growth factor receptor Kit; SCFR; Piebald trait protein; PBT; Proto-oncogene c-Kit; Tyrosine-protein kinase Kit; p145 c-kit; v-kit Hardy-Zuckerman 4 feline sarcoma viral oncogene homolog; CD antigen CD117
Gene ID	3815
SwissProt ID	P10721
Immunogen	The antiserum was produced against synthesized peptide derived from human c-Kit. AA range:688-737

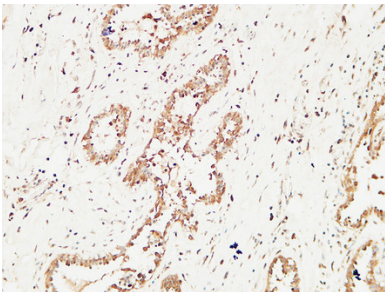
Background

KIT encodes the human homolog of the proto-oncogene c-kit. C-kit was first identified as the cellular homolog of the feline sarcoma viral oncogene v-kit. KIT is a type 3 transmembrane receptor for MGF (mast cell growth factor, also known as stem cell factor). Mutations in KIT are associated with gastrointestinal stromal tumors, mast cell disease, acute myelogenous leukemia, and piebaldism.

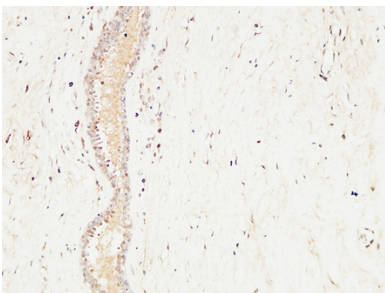
Research Area

Immunology

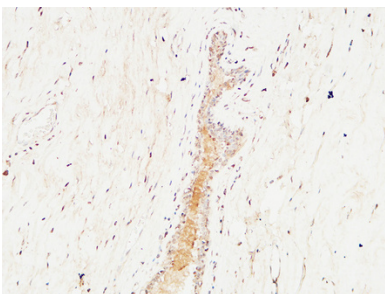
Image Data



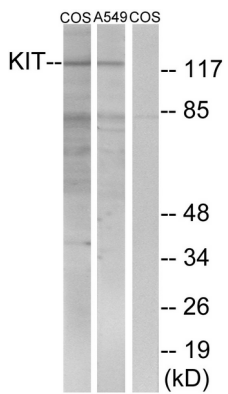
Immunohistochemistry analysis of paraffin-embedded Human Mammary cancer using c-Kit antibody. High-pressure and temperature Tris-EDTA pH 8.0 was used for antigen retrieval.



Immunohistochemical analysis of paraffin-embedded Human tonsils using c-Kit antibody. High-pressure and temperature Tris-EDTA pH 8.0 was used for antigen retrieval.



Immunohistochemistry analysis of paraffin-embedded Human Mammary cancer using c-Kit antibody. High-pressure and temperature Tris-EDTA pH 8.0 was used for antigen retrieval.



Western blot analysis of c-Kit in COS7/A549 lysates using c-Kit antibody. The lane on the right is blocked with the synthesized peptide.