
Product Name: IL-6 Rabbit Polyclonal Antibody**Catalog #: APRab03851**

For research use only.

Summary

Description	Rabbit polyclonal Antibody
Host	Rabbit
Application	WB,IHC,ELISA
Reactivity	Human
Conjugation	Unconjugated
Modification	Unmodified
Isotype	IgG
Clonality	Polyclonal
Form	Liquid
Concentration	1mg/ml
Storage	Aliquot and store at -20°C (valid for 12 months). Avoid freeze/thaw cycles.
Shipping	Ice bags
Buffer	Liquid in PBS containing 50% glycerol, 0.5% protective protein and 0.02% sodium azide, pH 7.3.
Purification	Affinity Purification

Application

Dilution Ratio	WB 1:500-1:1000,IHC 1:50-1:100,ELISA 1:5000-1:20000
Molecular Weight	Calculated MW: 24 kDa; Observed MW: 24 kDa

Antigen Information

Gene Name	IL6
Alternative Names	IL6; IFNB2; Interleukin-6; IL-6; B-cell stimulatory factor 2; BSF-2; CTL differentiation factor; CDF; Hybridoma growth factor; Interferon beta-2; IFN-beta-2
Gene ID	3569
SwissProt ID	P05231
Immunogen	The antiserum was produced against synthesized peptide derived from the Internal region of human IL6. AA range:131-180

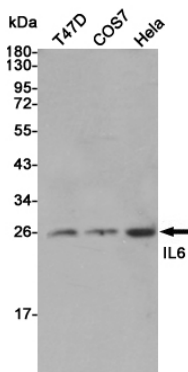
Background

Interleukine 6 (IL-6) is a cytokine produced primarily by stimulated monocytes, fibroblasts and epithelial cells. It has a wide variety of biological functions through activating a cell surface signaling assembly composed of IL6, IL6RA, and the shared signaling receptor gp130. The cytokine plays an essential role in the final differentiation of b-cells into Ig-secreting cells, and induces myeloma, plasmacytoma growth, nerve cells differentiations. In addition, IL-6 is an important regulator of acute phase reaction.

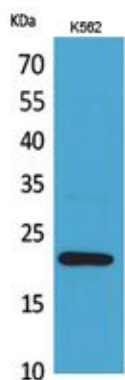
Research Area

Immunology

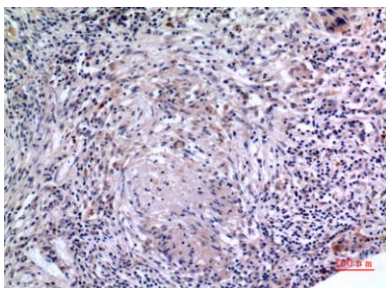
Image Data



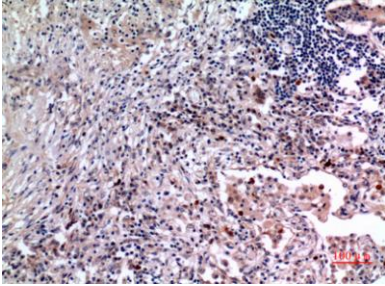
Western blot analysis of IL-6 in T47D, COS7 and HeLa lysates using IL-6 antibody.



Western blot analysis of IL-6 in K562 lysates using IL-6 antibody.



Immunohistochemistry analysis of paraffin-embedded Human lung using IL-6 antibody. High-pressure and temperature Sodium Citrate pH 6.0 was used for antigen retrieval.



Immunohistochemistry analysis of paraffin-embedded Human lung using IL-6 antibody. High-pressure and temperature Sodium Citrate pH 6.0 was used for antigen retrieval.