

Product Name: TGF beta 1 Rabbit Polyclonal Antibody**Catalog #: APRab03849**

For research use only.

Summary

Description	Rabbit polyclonal Antibody
Host	Rabbit
Application	WB,IHC,ICC/IF,ELISA
Reactivity	Human,Mouse,Rat
Conjugation	Unconjugated
Modification	Unmodified
Isotype	IgG
Clonality	Polyclonal
Form	Liquid
Concentration	1mg/ml
Storage	Aliquot and store at -20°C (valid for 12 months). Avoid freeze/thaw cycles.
Shipping	Ice bags
Buffer	Liquid in PBS containing 50% glycerol, 0.5% protective protein and 0.02% sodium azide, pH 7.3.
Purification	Affinity Purification

Application

Dilution Ratio	WB 1:500-1:1000,IHC 1:50-1:100,ICC/IF 1:50-1:200,ELISA 1:5000-1:20000
Molecular Weight	Calculated MW: 44 kDa; Observed MW: 44 kDa

Antigen Information

Gene Name	TGFB1
Alternative Names	TGF beta 1; TGFB; CED; LAP
Gene ID	7040
SwissProt ID	P01137
Immunogen	Recombinant protein of human TGF beta 1

Background

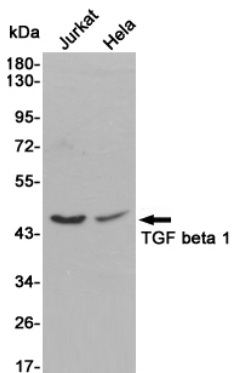
Multifunctional protein that controls proliferation, differentiation and other functions in many cell types. Many cells synthesize TGFB1 and have specific receptors for it. It positively and negatively regulates many other growth factors. It plays an important

role in bone remodeling as it is a potent stimulator of osteoblastic bone formation, causing chemotaxis, proliferation and differentiation in committed osteoblasts.

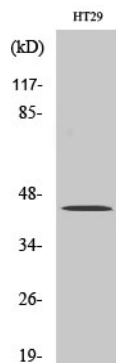
Research Area

Cardiovascular

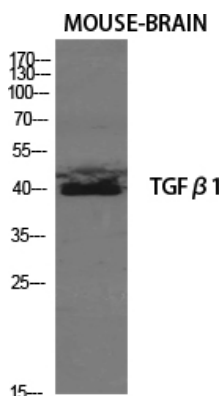
Image Data



Western blot analysis of TGF beta 1 in Jurkat and Hela lysates using TGF beta 1 antibody.



Western blot analysis of TGF beta 1 in MCF-7 lysates using TGFbeta1 antibody.



Western blot analysis of TGF beta 1 in mouse brain lysates using TGFu3b21 antibody

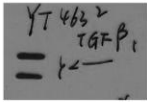
mouse-brain



TGF B1 precursor (40KD)

Western blot analysis of TGF beta 1 in mouse brain lysates using TGF beta 1 antibody

mouse-brain



TGF B1 precursor (40KD)

LAP form 35KD