
Product Name: Claudin 1 Rabbit Polyclonal Antibody**Catalog #: APRab03842**

For research use only.

Summary

Description	Rabbit polyclonal Antibody
Host	Rabbit
Application	WB,IHC,ICC/IF,ELISA
Reactivity	Human,Mouse,Rat
Conjugation	Unconjugated
Modification	Unmodified
Isotype	IgG
Clonality	Polyclonal
Form	Liquid
Concentration	1mg/ml
Storage	Aliquot and store at -20°C (valid for 12 months). Avoid freeze/thaw cycles.
Shipping	Ice bags
Buffer	Liquid in PBS containing 50% glycerol, 0.5% protective protein and 0.02% sodium azide, pH 7.3.
Purification	Affinity Chromatography

Application

Dilution Ratio	WB 1:500-1:1000,IHC 1:50-1:100,ICC/IF 1:50-1:200,ELISA 1:5000-1:20000
Molecular Weight	Calculated MW: 23 kDa; Observed MW: 23 kDa

Antigen Information

Gene Name	CLDN1
Alternative Names	CLDN1; CLD1; SEMP1; Claudin-1; Senescence-associated epithelial membrane protein
Gene ID	9076
SwissProt ID	O95832
Immunogen	The antiserum was produced against synthesized peptide derived from human Claudin 1. AA range:162-211

Background

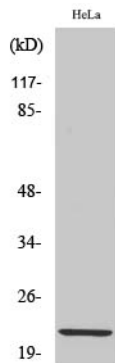
The claudin family is composed of 23 integral membrane proteins, and their expression, which varies among tissue types, may

determine both the strength and properties of the epithelial barrier. Alteration in claudin protein expression pattern is associated with several types of cancer. Claudin-1 is expressed primarily in keratinocytes and normal mammary epithelial cells, but is absent or reduced in breast carcinomas and breast cancer cell lines.

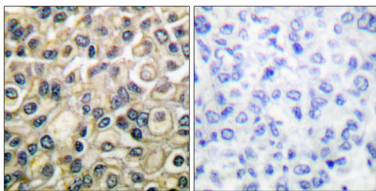
Research Area

Cell Biology

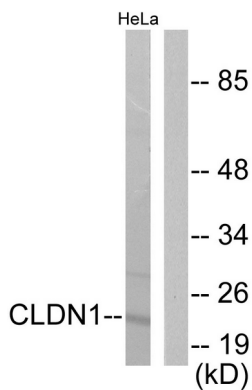
Image Data



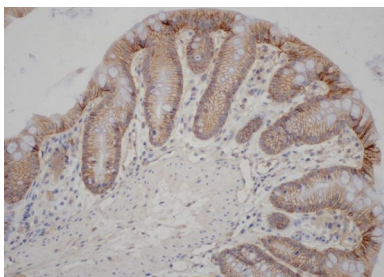
Western blot analysis of Claudin 1 in HeLa lysates using Claudin 1 antibody.



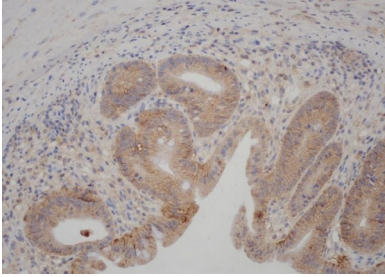
Immunohistochemistry analysis of paraffin-embedded Human breast carcinoma tissue, using Claudin 1 antibody. High-pressure and temperature Sodium Citrate pH 6.0 was used for antigen retrieval. Sample with blocking peptide on the right.



Western blot analysis of Claudin 1 in HeLa lysates using Claudin 1 antibody. The lane on the right is blocked with the synthesized peptide.



Immunohistochemistry analysis of paraffin-embedded Mouse Colon tissue, using Claudin 1 antibody. High-pressure and temperature Tris-EDTA pH 9.0 was used for antigen retrieval.



Immunohistochemistry analysis of paraffin-embedded Mouse Colon tissue, using Claudin 1 antibody. High-pressure and temperature Tris-EDTA pH 9.0 was used for antigen retrieval.