
Product Name: Cyclin D1 Rabbit Polyclonal Antibody**Catalog #: APRab03732**

For research use only.

Summary

Description	Rabbit polyclonal Antibody
Host	Rabbit
Application	WB,IHC,IP
Reactivity	Human,Mouse,Rat
Conjugation	Unconjugated
Modification	Unmodified
Isotype	IgG
Clonality	Polyclonal
Form	Liquid
Concentration	1mg/ml
Storage	Aliquot and store at -20°C (valid for 12 months). Avoid freeze/thaw cycles.
Shipping	Ice bags
Buffer	50mM Tris-Glycine(pH 7.4), 0.15M NaCl, 40% Glycerol, 0.01% Sodium azide and 0.05% protective protein
Purification	Affinity Purification

Application

Dilution Ratio	WB 1:500-1:1000,IHC 1:50-1:100,IP 1:20-1:50
Molecular Weight	Calculated MW: 34 kDa; Observed MW: 34 kDa

Antigen Information

Gene Name	CCND1
Alternative Names	CCND1; BCL1; D11S287E; PRAD1; U21B31; Cyclin D1
Gene ID	595
SwissProt ID	P24385
Immunogen	A synthetic peptide corresponding to target protein

Background

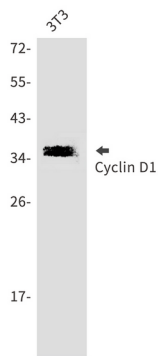
Phosphorylation of RB1 allows dissociation of the transcription factor E2F from the RB/E2F complex and the subsequent transcription of E2F target genes which are responsible for the progression through the G1 phase. Hypophosphorylates RB1 in

early G1 phase. Cyclin D-CDK4 complexes are major integrators of various mitogenic and antimitogenic signals.

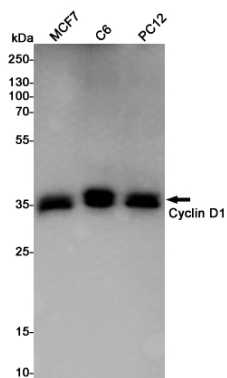
Research Area

Cell Biology

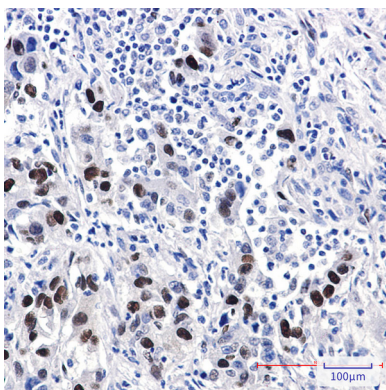
Image Data



Western blot analysis of Cyclin D1 in 3T3 lysates using Cyclin D1 antibody.



Western blot analysis of Cyclin D1 in MCF-7, C6, PC-12 lysates using Cyclin D1 antibody.



Immunohistochemistry analysis of paraffin-embedded Human lung cancer using Cyclin D1 antibody. High-pressure and temperature Sodium Citrate pH 6.0 was used for antigen retrieval.