
Product Name: Phospho-PKC alpha (Thr638) Rabbit Polyclonal Antibody**Catalog #: APRab03728**

For research use only.

Summary

Description	Rabbit polyclonal Antibody
Host	Rabbit
Application	WB,IHC,ICC/IF,IP
Reactivity	Human,Mouse,Rat
Conjugation	Unconjugated
Modification	Phosphorylated
Isotype	IgG
Clonality	Polyclonal
Form	Liquid
Concentration	1mg/ml
Storage	Aliquot and store at -20°C (valid for 12 months). Avoid freeze/thaw cycles.
Shipping	Ice bags
Buffer	Rabbit IgG in phosphate buffered saline , pH 7.4, 150mM NaCl, 0.02% sodium azide and 50% glycerol.
Purification	Affinity Chromatography

Application

Dilution Ratio	WB 1:500-1:1000,IHC 1:50-1:100,ICC/IF 1:50-1:200,IP 1:20-1:50
Molecular Weight	Calculated MW: 77 kDa; Observed MW: 80 kDa

Antigen Information

Gene Name	PRKCA
Alternative Names	PRKCA; PKCA; PRKACA; Protein kinase C alpha type; PKC-A; PKC-alpha
Gene ID	5578
SwissProt ID	P17252
Immunogen	A synthetic Phosphorylated peptide corresponding to residues target protein

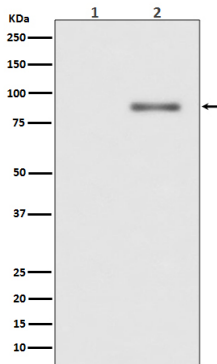
Background

PKC alpha is an AGC kinase of the PKC family. A classical PKC downstream of many mitogenic and receptors. Classical PKCs are calcium-dependent enzymes that are activated by phosphatidylserine, diacylglycerol and phorbol esters.

Research Area

Signal Transduction

Image Data



Western blot analysis of Phospho-PKC alpha (T638) in (1) Jurkat lysates treated with TPA; (2) Jurkat lysates using Phospho-PKC alpha (Thr638) antibody.