
Product Name: SOD2 Rabbit Polyclonal Antibody**Catalog #: APRab03632**

For research use only.

Summary

Description	Rabbit polyclonal Antibody
Host	Rabbit
Application	WB
Reactivity	Human, Mouse, Rat, Monkey
Conjugation	Unconjugated
Modification	Unmodified
Isotype	IgG
Clonality	Polyclonal
Form	Liquid
Concentration	1mg/ml
Storage	Aliquot and store at -20°C (valid for 12 months). Avoid freeze/thaw cycles.
Shipping	Ice bags
Buffer	Liquid in PBS containing 50% glycerol, 0.5% protective protein and 0.02% sodium azide, pH 7.3.
Purification	Affinity Purification

Application

Dilution Ratio	WB 1:500-1:1000
Molecular Weight	Calculated MW: 25 kDa; Observed MW: 25 kDa

Antigen Information

Gene Name	SOD2
Alternative Names	IPOB; IPO-B; MNSOD; MVCD6; Mn-SOD; SOD2
Gene ID	6648
SwissProt ID	P04179
Immunogen	A synthetic peptide of human SOD2

Background

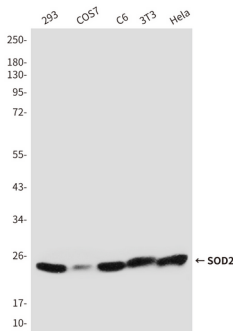
SOD-2 is a homotetrameric manganese enzyme (also known as MnSOD) that functions in the mitochondrion. ROS are implicated in a wide range of degenerative processes, including Alzheimer's disease, Parkinson's disease and ischemic heart

disease. Homozygous mutant mice, which lack SOD-2, exhibit dilated cardiomyopathy, accumulation of lipid in liver and skeletal muscle, metabolic acidosis, oxidative DNA damage and respiratory chain deficiencies in heart and skeletal muscle.

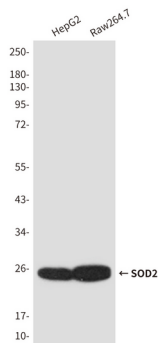
Research Area

Cell Biology

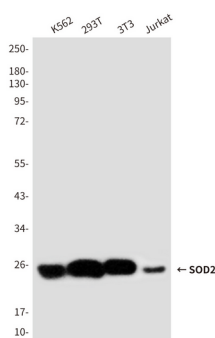
Image Data



Western blot analysis of SOD2 in 293, COS7, C6, 3T3 and HeLa lysates using SOD2 antibody.



Western blot analysis of SOD2 in HepG2 and Raw264.7 lysates using SOD2 antibody.



Western blot analysis of SOD2 in K562, 293T, 3T3 and Jurkat lysates using SOD2 antibody.