
Product Name: 14-3-3 Rabbit Polyclonal Antibody**Catalog #: APRab03629**

For research use only.

Summary

Description	Rabbit polyclonal Antibody
Host	Rabbit
Application	WB
Reactivity	Human, Mouse, Rat
Conjugation	Unconjugated
Modification	Unmodified
Isotype	IgG
Clonality	Polyclonal
Form	Liquid
Concentration	1mg/ml
Storage	Aliquot and store at -20°C (valid for 12 months). Avoid freeze/thaw cycles.
Shipping	Ice bags
Buffer	Liquid in PBS containing 50% glycerol, 0.5% protective protein and 0.02% sodium azide, pH 7.3.
Purification	Affinity Purification

Application

Dilution Ratio	WB 1:500-1:1000
Molecular Weight	Calculated MW: 27-29 kDa; Observed MW: 27-29 kDa

Antigen Information

Gene Name	YWHAB/YWHAE/YWHAH 14-3-3; 14 3 3; 14 3 3 protein beta; 14 3 3 protein beta/alpha; 14 3 3 protein zeta; 14 3 3 zeta; 14-3-3 protein beta/alpha; 14-3-3 protein/cytosolic phospholipase A2; 1433B_HUMAN; GW128; HS1; KCIP 1; KCIP-1; MGC111427; MGC126532; MGC138156; N-terminally processed; Protein 1054; Protein kinase C inhibitor protein 1; Tyrosine 3-monooxygenase/tryptophan 5-monooxygenase activation protein; delta polypeptide; Tyrosine 3/tryptophan 5 -monooxygenase activation protein; zeta polypeptide; YWHAB; YWHAD; YWHAZ.
Alternative Names	
Gene ID	7529/7531/7533/7532/2810/10971/7534

SwissProt ID P31946/P62258/Q04917/P61981/P31947/P27348/P63104

Immunogen

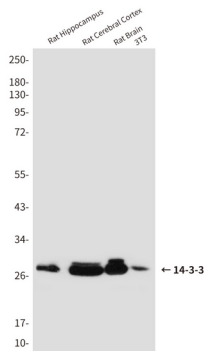
Background

Adapter protein implicated in the regulation of a large spectrum of both general and specialized signaling pathways. Binds to a large number of partners, usually by recognition of a phosphoserine or phosphothreonine motif. Binding generally results in the modulation of the activity of the binding partner. Negative regulator of osteogenesis.

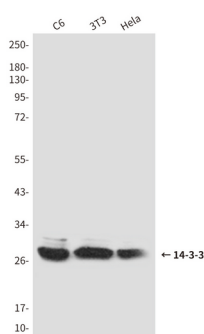
Research Area

Neuroscience

Image Data



Western blot analysis of 14-3-3 (pan) in rat Hippocampus, rat Cerebral Cortex and rat Brain lysates using 14-3-3 (pan) antibody.



Western blot analysis of 14-3-3 in C6, 3T3 and HeLa lysates using 14-3-3 (pan) antibody.