

**Product Name: Synapsin 1 Rabbit Polyclonal Antibody****Catalog #: APRab03409**

For research use only.

**Summary**

<b>Description</b>	Rabbit polyclonal Antibody
<b>Host</b>	Rabbit
<b>Application</b>	WB,IHC,ICC/IF,ELISA
<b>Reactivity</b>	Human,Mouse,Rat
<b>Conjugation</b>	Unconjugated
<b>Modification</b>	Unmodified
<b>Isotype</b>	IgG
<b>Clonality</b>	Polyclonal
<b>Form</b>	Liquid
<b>Concentration</b>	1mg/ml
<b>Storage</b>	Aliquot and store at -20°C (valid for 12 months). Avoid freeze/thaw cycles.
<b>Shipping</b>	Ice bags
<b>Buffer</b>	Liquid in PBS containing 50% glycerol, 0.5% protective protein and 0.02% sodium azide, pH 7.3.
<b>Purification</b>	Affinity Purification

**Application**

<b>Dilution Ratio</b>	WB 1:500-1:1000,IHC 1:50-1:100,ICC/IF 1:50-1:200,ELISA 1:5000-1:20000
<b>Molecular Weight</b>	Calculated MW: 74 kDa; Observed MW: 74 kDa

**Antigen Information**

<b>Gene Name</b>	SYN1
<b>Alternative Names</b>	SYN1; Synapsin-1; Brain protein 4.1; Synapsin I
<b>Gene ID</b>	6853
<b>SwissProt ID</b>	P17600
<b>Immunogen</b>	A synthetic peptide corresponding to target protein

**Background**

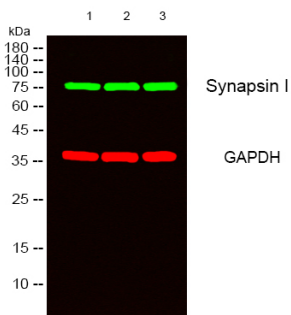
This gene is a member of the synapsin gene family. Synapsins encode neuronal phosphoproteins which associate with the cytoplasmic surface of synaptic vesicles. Family members are characterized by common protein domains, and they are

implicated in synaptogenesis and the modulation of neurotransmitter release, suggesting a potential role in several neuropsychiatric diseases.

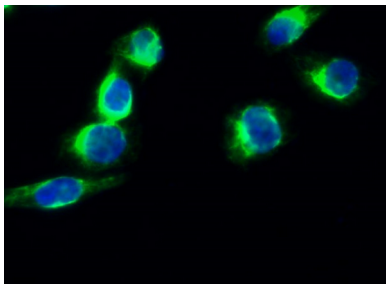
## Research Area

Neuroscience

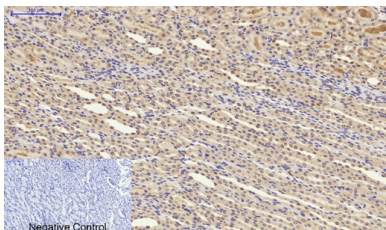
## Image Data



Western blot analysis of Synapsin 1 in HeLa, 293, 3T3 lysates using Synapsin 1 antibody.



Immunofluorescence analysis of Synapsin 1 in HeLa using Synapsin 1 antibody(green)



Immunohistochemistry analysis of paraffin-embedded rat kidney tissue using Synapsin 1 antibody. High-pressure and temperature Sodium Citrate pH 6.0 was used for antigen retrieval.