

---

**Product Name: GPR91 Rabbit Polyclonal Antibody****Catalog #: APRab03404**

For research use only.

**Summary**

<b>Description</b>	Rabbit polyclonal Antibody
<b>Host</b>	Rabbit
<b>Application</b>	WB,ICC/IF,ELISA
<b>Reactivity</b>	Human,Mouse,Rat
<b>Conjugation</b>	Unconjugated
<b>Modification</b>	Unmodified
<b>Isotype</b>	IgG
<b>Clonality</b>	Polyclonal
<b>Form</b>	Liquid
<b>Concentration</b>	1mg/ml
<b>Storage</b>	Aliquot and store at -20°C (valid for 12 months). Avoid freeze/thaw cycles.
<b>Shipping</b>	Ice bags
<b>Buffer</b>	Liquid in PBS containing 50% glycerol, 0.5% protective protein and 0.02% sodium azide, pH 7.3.
<b>Purification</b>	Affinity Chromatography

**Application**

<b>Dilution Ratio</b>	WB 1:500-1:1000,ICC/IF 1:50-1:200,ELISA 1:5000-1:20000
<b>Molecular Weight</b>	Calculated MW: 39 kDa; Observed MW: 39 kDa

**Antigen Information**

<b>Gene Name</b>	SUCNR1
<b>Alternative Names</b>	GPR91
<b>Gene ID</b>	56670
<b>SwissProt ID</b>	Q9BXA5
<b>Immunogen</b>	

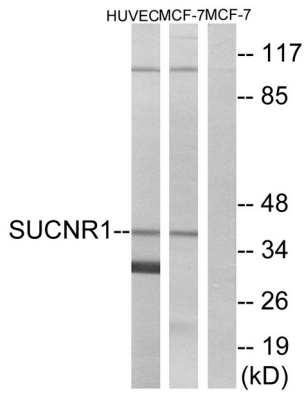
**Background**

Receptor for succinate.

## Research Area

Signal Transduction

## Image Data



Western blot analysis of GPR91 in HUVEC and MCF-7 lysates using SUCNR1 antibody. The lane on the right is blocked with the synthesized peptide.