

---

**Product Name: Phospho-CREB (Ser133) Rabbit Polyclonal Antibody****Catalog #: APRab03380**

For research use only.

**Summary**

<b>Description</b>	Rabbit polyclonal Antibody
<b>Host</b>	Rabbit
<b>Application</b>	WB,IHC,ICC/IF,ELISA,IP
<b>Reactivity</b>	Human,Mouse,Rat
<b>Conjugation</b>	Unconjugated
<b>Modification</b>	Phosphorylated
<b>Isotype</b>	IgG
<b>Clonality</b>	Polyclonal
<b>Form</b>	Liquid
<b>Concentration</b>	1mg/ml
<b>Storage</b>	Aliquot and store at -20°C (valid for 12 months). Avoid freeze/thaw cycles.
<b>Shipping</b>	Ice bags
<b>Buffer</b>	Liquid in PBS containing 50% glycerol, 0.5% protective protein and 0.02% sodium azide, pH 7.3.
<b>Purification</b>	Affinity Purification

**Application**

<b>Dilution Ratio</b>	WB 1:500-1:1000,IHC 1:50-1:100,ICC/IF 1:50-1:200,ELISA 1:5000-1:20000,IP 1:20-1:50
<b>Molecular Weight</b>	Calculated MW: 35 kDa; Observed MW: 35 kDa

**Antigen Information**

<b>Gene Name</b>	CREB1
<b>Alternative Names</b>	CREB1; Cyclic AMP-responsive element-binding protein 1; CREB-1; cAMP-responsive element-binding protein 1
<b>Gene ID</b>	1385
<b>SwissProt ID</b>	P16220
<b>Immunogen</b>	The antiserum was produced against synthesized peptide derived from human CREB around the phosphorylation site of Ser133. AA range:100-149

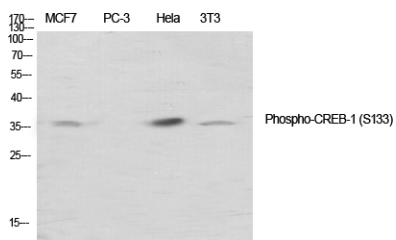
**Background**

This gene encodes a transcription factor that is a member of the leucine zipper family of DNA binding proteins. This protein binds as a homodimer to the cAMP-responsive element, an octameric palindrome.

## Research Area

Epigenetics and Nuclear Signaling

## Image Data



Western blot analysis of Phospho-CREB (Ser133) in various lysates using Phospho-CREB (Ser133) antibody.