

---

**Product Name: Mitofusin 2 Rabbit Polyclonal Antibody****Catalog #: APRab03377**

For research use only.

**Summary**

<b>Description</b>	Rabbit polyclonal Antibody
<b>Host</b>	Rabbit
<b>Application</b>	WB,IHC,ELISA
<b>Reactivity</b>	Human,Mouse,Rat
<b>Conjugation</b>	Unconjugated
<b>Modification</b>	Unmodified
<b>Isotype</b>	IgG
<b>Clonality</b>	Polyclonal
<b>Form</b>	Liquid
<b>Concentration</b>	1mg/ml
<b>Storage</b>	Aliquot and store at -20°C (valid for 12 months). Avoid freeze/thaw cycles.
<b>Shipping</b>	Ice bags
<b>Buffer</b>	Liquid in PBS containing 50% glycerol, 0.5% protective protein and 0.02% sodium azide, pH 7.3.
<b>Purification</b>	Affinity Chromatography

**Application**

<b>Dilution Ratio</b>	WB 1:500-1:1000,IHC 1:50-1:100,ELISA 1:5000-1:20000
<b>Molecular Weight</b>	Calculated MW: 86 kDa; Observed MW: 86 kDa

**Antigen Information**

<b>Gene Name</b>	MFN2
<b>Alternative Names</b>	MFN2,CPRP1, KIAA0214,Mitofusin-2,Transmembrane GTPase MFN2
<b>Gene ID</b>	9927
<b>SwissProt ID</b>	O95140
<b>Immunogen</b>	The antiserum was produced against synthesized peptide derived from human Mfn2. AA range:354-403

**Background**

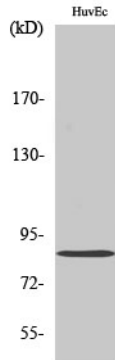
Plays an important role in the regulation of vascular smooth muscle cell proliferation. Involved in the clearance of damaged

mitochondria via selective autophagy (mitophagy). Is required for PARK2 recruitment to dysfunctional mitochondria.

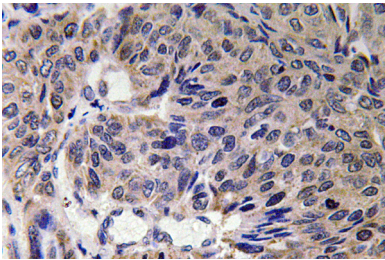
## Research Area

Tags & Cell Markers

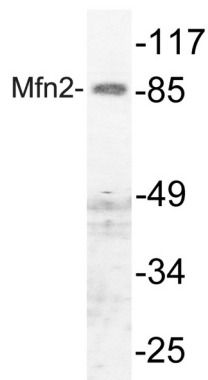
## Image Data



Western blot analysis of Mitofusin 2 in various lysates using Mitofusin 2 antibody.



Immunohistochemistry analysis of paraffin-embedded Human lung carcinoma tissue using Mitofusin 2 antibody. High-pressure and temperature Sodium Citrate pH 6.0 was used for antigen retrieval.



Western blot analysis of Mitofusin 2 in HUVEC lysates using Mfn2 antibody.