

---

**Product Name: Cytochrome B Rabbit Polyclonal Antibody****Catalog #: APRab03360**

For research use only.

**Summary**

<b>Description</b>	Rabbit polyclonal Antibody
<b>Host</b>	Rabbit
<b>Application</b>	WB,ELISA
<b>Reactivity</b>	Human,Mouse
<b>Conjugation</b>	Unconjugated
<b>Modification</b>	Unmodified
<b>Isotype</b>	IgG
<b>Clonality</b>	Polyclonal
<b>Form</b>	Liquid
<b>Concentration</b>	1mg/ml
<b>Storage</b>	Aliquot and store at -20°C (valid for 12 months). Avoid freeze/thaw cycles.
<b>Shipping</b>	Ice bags
<b>Buffer</b>	Liquid in PBS containing 50% glycerol, 0.5% protective protein and 0.02% sodium azide, pH 7.3.
<b>Purification</b>	Affinity Purification

**Application**

<b>Dilution Ratio</b>	WB 1:500-1:1000,ELISA 1:5000-1:20000
<b>Molecular Weight</b>	Calculated MW: 43 kDa; Observed MW: 48 kDa

**Antigen Information**

<b>Gene Name</b>	MT-CYB
<b>Alternative Names</b>	Cytochrome b (Complex III subunit 3; Complex III subunit III; Cytochrome b-c1 complex subunit 3; Ubiquinol-cytochrome-c reductase complex cytochrome b subunit)
<b>Gene ID</b>	4519
<b>SwissProt ID</b>	P00156
<b>Immunogen</b>	Synthesized peptide derived from human Cytochrome b. at AA range: 331-380

**Background**

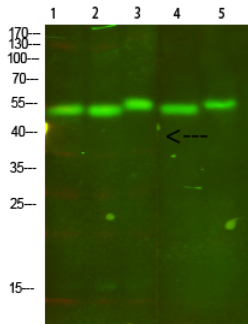
Component of the ubiquinol-cytochrome c reductase complex (complex III or cytochrome b-c1 complex) that is part of the

mitochondrial respiratory chain.

## Research Area

Signal Transduction

## Image Data



Western blot analysis of Cytochrome B in mouse lung, mouse brain 3, mouse spleen 4, mouse kidney 5, mouse heart lysates using Cytochrome B antibody.