

Product Name: FUNDC1 Rabbit Polyclonal Antibody**Catalog #: APRab03353**

For research use only.

Summary

Description	Rabbit polyclonal Antibody
Host	Rabbit
Application	WB,ELISA
Reactivity	Human,Mouse,Rat
Conjugation	Unconjugated
Modification	Unmodified
Isotype	IgG
Clonality	Polyclonal
Form	Liquid
Concentration	1mg/ml
Storage	Aliquot and store at -20°C (valid for 12 months). Avoid freeze/thaw cycles.
Shipping	Ice bags
Buffer	Liquid in PBS containing 50% glycerol, 0.5% protective protein and 0.02% sodium azide, pH 7.3.
Purification	Affinity Purification

Application

Dilution Ratio	WB 1:500-1:1000,ELISA 1:5000-1:20000
Molecular Weight	Calculated MW: 17 kDa; Observed MW: 17 kDa

Antigen Information

Gene Name	FUNDC1
Alternative Names	FUNDC1; FUN14 domain-containing protein 1
Gene ID	139341
SwissProt ID	Q8IVP5
Immunogen	The antiserum was produced against synthesized peptide derived from the N-terminal region of human FUNDC1. AA range:1-50

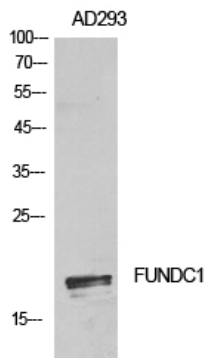
Background

Acts as an activator of hypoxia-induced mitophagy, an important mechanism for mitochondrial quality control.

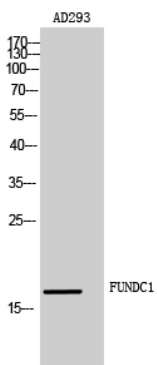
Research Area

Cell Biology

Image Data



Western blot analysis of FUNDC1 in AD293 lysates using FUNDC1 antibody.



Western blot analysis of FUNDC1 in AD293 lysates using FUNDC1 antibody.