

Product Name: NFAT2 Rabbit Polyclonal Antibody**Catalog #: APRab03352**

For research use only.

Summary

Description	Rabbit polyclonal Antibody
Host	Rabbit
Application	WB,IHC,ELISA
Reactivity	Human,Mouse
Conjugation	Unconjugated
Modification	Unmodified
Isotype	IgG
Clonality	Polyclonal
Form	Liquid
Concentration	1mg/ml
Storage	Aliquot and store at -20°C (valid for 12 months). Avoid freeze/thaw cycles.
Shipping	Ice bags
Buffer	Liquid in PBS containing 50% glycerol, 0.5% protective protein and 0.02% sodium azide, pH 7.3.
Purification	Affinity Purification

Application

Dilution Ratio	WB 1:500-1:1000,IHC 1:50-1:100,ELISA 1:5000-1:20000
Molecular Weight	Calculated MW: 101 kDa; Observed MW: 105 kDa

Antigen Information

Gene Name	NFATC1
Alternative Names	NFATC1; NFAT2; NFATC; Nuclear factor of activated T-cells; cytoplasmic 1; NF-ATc1; NFATc1; NFAT transcription complex cytosolic component; NF-ATc; NFATc
Gene ID	4772
SwissProt ID	O95644
Immunogen	The antiserum was produced against synthesized peptide derived from the C-terminal region of human NFATC1. AA range:881-930

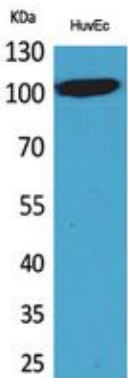
Background

NFAT proteins are predominantly expressed in cells of the immune system, but are also expressed in skeletal muscle, keratinocytes, and adipocytes, regulating cell differentiation programs in these cells.

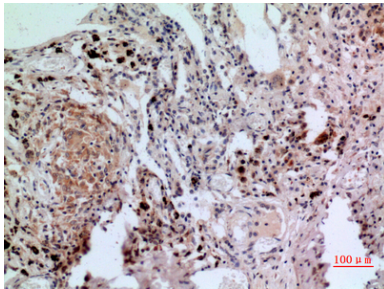
Research Area

Immunology

Image Data



Western blot analysis of NFAT2 in HuvEc lysates using NFAT2 antibody.



Immunohistochemistry analysis of paraffin-embedded Human lung using NFAT2 antibody. High-pressure and temperature Sodium Citrate pH 6.0 was used for antigen retrieval.