

Product Name: A1BG Rabbit Polyclonal Antibody**Catalog #: APRab03345**

For research use only.

Summary

Description	Rabbit polyclonal Antibody
Host	Rabbit
Application	WB,IHC,ELISA
Reactivity	Human
Conjugation	Unconjugated
Modification	Unmodified
Isotype	IgG
Clonality	Polyclonal
Form	Liquid
Concentration	1mg/ml
Storage	Aliquot and store at -20°C (valid for 12 months). Avoid freeze/thaw cycles.
Shipping	Ice bags
Buffer	Liquid in PBS containing 50% glycerol, 0.5% protective protein and 0.02% sodium azide, pH 7.3.
Purification	Affinity Purification

Application

Dilution Ratio	WB 1:500-1:1000,IHC 1:50-1:100,ELISA 1:5000-1:20000
Molecular Weight	Calculated MW: 54 kDa; Observed MW: 28 kDa

Antigen Information

Gene Name	A1BG
Alternative Names	A1BG; Alpha-1B-glycoprotein; Alpha-1-B glycoprotein
Gene ID	1
SwissProt ID	P04217
Immunogen	Synthesized peptide derived from A1BG . at AA range: 100-180

Background

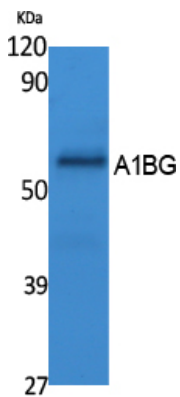
A1BG is a plasma glycoprotein of unknown function. It shows sequence similarity to the variable regions of some immunoglobulin supergene family member proteins. A1BG was recently shown to bind cysteine rich secretory protein 3 (CRISP

3) with high affinity, and it has been suggested that A1BG protects against the potentially toxic effects of CRISP 3 in the circulation.

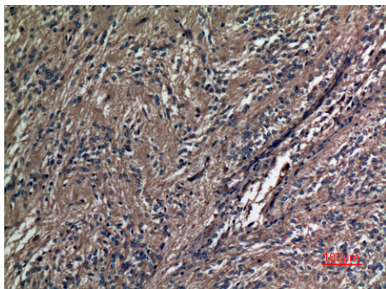
Research Area

Cell Biology

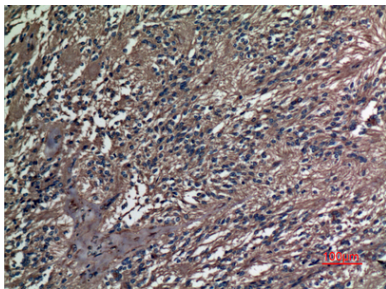
Image Data



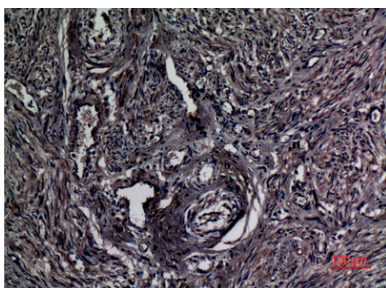
Western blot analysis of A1BG in K562 lysates using A1BG antibody.



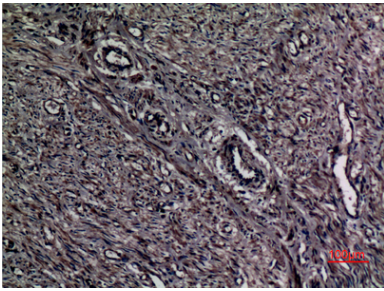
Immunohistochemistry analysis of paraffin-embedded Human ovary using A1BG antibody. High-pressure and temperature Sodium Citrate pH 6.0 was used for antigen retrieval.



Immunohistochemistry analysis of paraffin-embedded Human ovary using A1BG antibody. High-pressure and temperature Sodium Citrate pH 6.0 was used for antigen retrieval.



Immunohistochemistry analysis of paraffin-embedded Human uterus using A1BG antibody. High-pressure and temperature Sodium Citrate pH 6.0 was used for antigen retrieval.



Immunohistochemistry analysis of paraffin-embedded Human uterus using A1BG antibody. High-pressure and temperature Sodium Citrate pH 6.0 was used for antigen retrieval.