
Product Name: Cytokeratin 18 Rabbit Polyclonal Antibody**Catalog #: APRab01401**

For research use only.

Summary

Description	Rabbit polyclonal Antibody
Host	Rabbit
Application	WB,IHC,ICC/IF,FC
Reactivity	Human
Conjugation	Unconjugated
Modification	Unmodified
Isotype	IgG
Clonality	Polyclonal
Form	Liquid
Concentration	1mg/ml
Storage	Aliquot and store at -20°C (valid for 12 months). Avoid freeze/thaw cycles.
Shipping	Ice bags
Buffer	50mM Tris-Glycine(pH 7.4), 0.15M NaCl, 40% Glycerol, 0.01% Sodium azide and 0.05% protective protein
Purification	Affinity Purification

Application

Dilution Ratio	WB 1:500-1:1000,IHC 1:50-1:100,ICC/IF 1:50-1:200,FC 1:50-1:100
Molecular Weight	Calculated MW: 48 kDa; Observed MW: 48 kDa

Antigen Information

Gene Name	Krt18
Alternative Names	CK18; CYK18; KRT18
Gene ID	16668.0
SwissProt ID	P05784
Immunogen	Recombinant protein of human Cytokeratin 18

Background

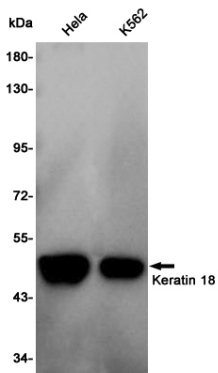
When phosphorylated, plays a role in filament reorganization. Involved in the delivery of mutated CFTR to the plasma membrane. Involved in the uptake of thrombin-antithrombin complexes by hepatic cells (By similarity). Together with KRT8, is

involved in interleukin-6 (IL-6)-mediated barrier protection.

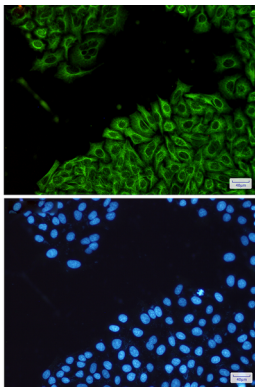
Research Area

Tags & Cell Markers

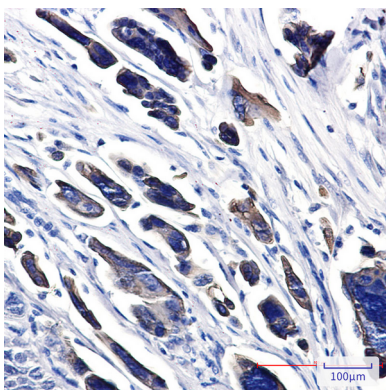
Image Data



Western blot analysis of Keratin 18 in HeLa, K562 lysates using Cytokeratin 18 antibody.



Immunocytochemistry analysis of Cytokeratin 18(green) in HeLa using Cytokeratin 18 antibody, and DAPI(blue)



Immunohistochemistry analysis of paraffin-embedded Human Cholangiocarcinoma using Cytokeratin 18 antibody. High-pressure and temperature Sodium Citrate pH 6.0 was used for antigen retrieval.