

Product Name: Plastin L Rabbit Polyclonal Antibody**Catalog #: APRab01400**

For research use only.

Summary

Description	Rabbit polyclonal Antibody
Host	Rabbit
Application	WB,IHC,ICC/IF,FC,IP
Reactivity	Human
Conjugation	Unconjugated
Modification	Unmodified
Isotype	IgG
Clonality	Polyclonal
Form	Liquid
Concentration	1mg/ml
Storage	Aliquot and store at -20°C (valid for 12 months). Avoid freeze/thaw cycles.
Shipping	Ice bags
Buffer	50mM Tris-Glycine(pH 7.4), 0.15M NaCl, 40% Glycerol, 0.01% Sodium azide and 0.05% protective protein
Purification	Affinity Purification

Application

Dilution Ratio	WB 1:500-1:1000,IHC 1:50-1:100,ICC/IF 1:50-1:200,FC 1:50-1:100,IP 1:20-1:50
Molecular Weight	Calculated MW: 70 kDa; Observed MW: 70 kDa

Antigen Information

Gene Name	LCP1
Alternative Names	CP64; L plastin; LC64P; LCP1; LPL; Lplastin; Plastin 2; PLS2
Gene ID	3936
SwissProt ID	P13796
Immunogen	A synthetic peptide of human Plastin L

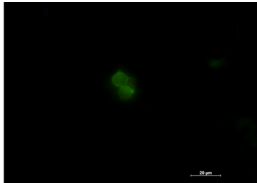
Background

Actin-binding protein. Plays a role in the activation of T-cells in response to costimulation through TCR/CD3 and CD2 or CD28. Modulates the cell surface expression of IL2RA/CD25 and CD69.

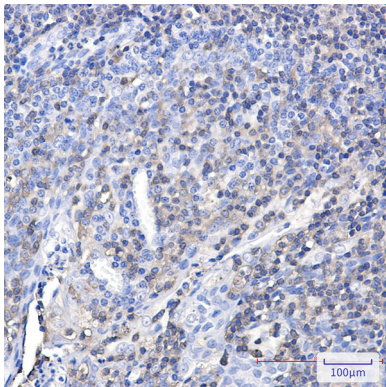
Research Area

Signal Transduction

Image Data



Immunocytochemistry analysis of Plastin L (green) in Jurkat using Plastin L antibody, and DAPI (blue).



Immunohistochemistry analysis of paraffin-embedded Human tonsil using Plastin L antibody. High-pressure and temperature Sodium Citrate pH 6.0 was used for antigen retrieval.