

Product Name: Islet 1 Rabbit Polyclonal Antibody**Catalog #: APRab01398**

For research use only.

Summary

Description	Rabbit polyclonal Antibody
Host	Rabbit
Application	WB,ICC/IF,FC,IP
Reactivity	Human
Conjugation	Unconjugated
Modification	Unmodified
Isotype	IgG
Clonality	Polyclonal
Form	Liquid
Concentration	1mg/ml
Storage	Aliquot and store at -20°C (valid for 12 months). Avoid freeze/thaw cycles.
Shipping	Ice bags
Buffer	50mM Tris-Glycine(pH 7.4), 0.15M NaCl, 40% Glycerol, 0.01% Sodium azide and 0.05% protective protein
Purification	Affinity Purification

Application

Dilution Ratio	WB 1:500-1:1000,ICC/IF 1:50-1:200,FC 1:50-1:100,IP 1:20-1:50
Molecular Weight	Calculated MW: 39 kDa; Observed MW: 39 kDa

Antigen Information

Gene Name	ISL1
Alternative Names	ISL1; Insulin gene enhancer protein ISL-1; Islet-1
Gene ID	3670
SwissProt ID	P61371
Immunogen	Recombinant protein of human Islet 1

Background

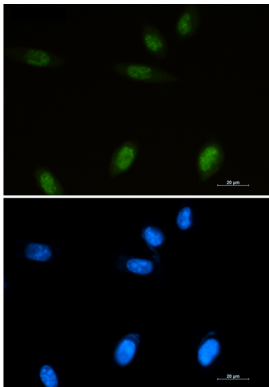
ISL1 (ISL1 transcription factor, LIM/homeodomain) is a member of the LIM/homeodomain family of transcription factors. It binds to the enhancer region of the insulin gene, among others, and may play an important role in regulating insulin gene

expression. It is central to the development of pancreatic cell lineages and may also be required for motor neuron generation. Islet-1 expression defines cardiac progenitor cell populations and is required for normal cardiac development and asymmetry.

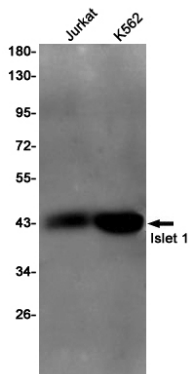
Research Area

Neuroscience

Image Data



Immunocytochemistry analysis of Islet 1 (green) in SH-SY5Y using Islet 1 antibody, and DAPI (blue).



Western blot analysis of Islet 1 in Jurkat, K562 lysates using Islet 1 antibody.