

---

**Product Name: Calbindin Rabbit Polyclonal Antibody****Catalog #: APRab01397**

For research use only.

**Summary**

<b>Description</b>	Rabbit polyclonal Antibody
<b>Host</b>	Rabbit
<b>Application</b>	WB,IHC
<b>Reactivity</b>	Human,Mouse,Rat
<b>Conjugation</b>	Unconjugated
<b>Modification</b>	Unmodified
<b>Isotype</b>	IgG
<b>Clonality</b>	Polyclonal
<b>Form</b>	Liquid
<b>Concentration</b>	1mg/ml
<b>Storage</b>	Aliquot and store at -20°C (valid for 12 months). Avoid freeze/thaw cycles.
<b>Shipping</b>	Ice bags
<b>Buffer</b>	50mM Tris-Glycine(pH 7.4), 0.15M NaCl, 40% Glycerol, 0.01% Sodium azide and 0.05% protective protein
<b>Purification</b>	Affinity Purification

**Application**

<b>Dilution Ratio</b>	WB 1:500-1:1000,IHC 1:50-1:100
<b>Molecular Weight</b>	Calculated MW: 30 kDa; Observed MW: 30 kDa

**Antigen Information**

<b>Gene Name</b>	CALB1
<b>Alternative Names</b>	avian-type; CAB27; CALB1; Calbindin 1 28kDa; Calbindin; D28K; RTVL H protein
<b>Gene ID</b>	793
<b>SwissProt ID</b>	P05937
<b>Immunogen</b>	A synthetic peptide of human Calbindin

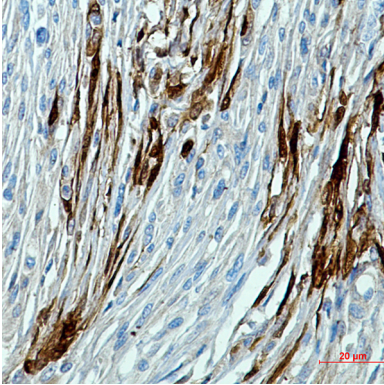
**Background**

Buffers cytosolic calcium. May stimulate a membrane Ca(2+)-ATPase and a 3',5'-cyclic nucleotide phosphodiesterase.

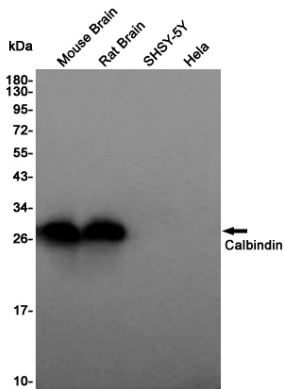
## Research Area

Neuroscience

## Image Data



Immunohistochemistry analysis of paraffin-embedded Human brain using Calbindin antibody. High-pressure and temperature Sodium Citrate pH 6.0 was used for antigen retrieval.



Western blot analysis of Calbindin in mouse Brain, rat Brain, SH-SY5Y, HeLa lysates using Calbindin antibody.