

---

**Product Name: LEF1 Rabbit Polyclonal Antibody****Catalog #: APRab01396**

For research use only.

**Summary**

<b>Description</b>	Rabbit polyclonal Antibody
<b>Host</b>	Rabbit
<b>Application</b>	WB,IHC,ICC/IF,FC,IP
<b>Reactivity</b>	Human,Rat
<b>Conjugation</b>	Unconjugated
<b>Modification</b>	Unmodified
<b>Isotype</b>	IgG
<b>Clonality</b>	Polyclonal
<b>Form</b>	Liquid
<b>Concentration</b>	1mg/ml
<b>Storage</b>	Aliquot and store at -20°C (valid for 12 months). Avoid freeze/thaw cycles.
<b>Shipping</b>	Ice bags
<b>Buffer</b>	50mM Tris-Glycine(pH 7.4), 0.15M NaCl, 40% Glycerol, 0.01% Sodium azide and 0.05% protective protein
<b>Purification</b>	Affinity Purification

**Application**

<b>Dilution Ratio</b>	WB 1:500-1:1000,IHC 1:50-1:100,ICC/IF 1:50-1:200,FC 1:50-1:100,IP 1:20-1:50
<b>Molecular Weight</b>	Calculated MW: 44 kDa; Observed MW: 25-58 kDa

**Antigen Information**

<b>Gene Name</b>	LEF1
<b>Alternative Names</b>	LEF1; Lymphoid enhancer-binding factor 1; LEF-1; T cell-specific transcription factor 1-alpha; TCF1-alpha
<b>Gene ID</b>	51176
<b>SwissProt ID</b>	Q9UJU2
<b>Immunogen</b>	A synthetic peptide of human LEF1

**Background**

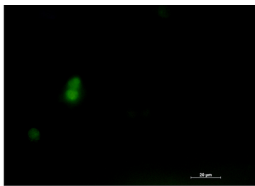
Participates in the Wnt signaling pathway. Activates transcription of target genes in the presence of CTNNB1 and EP300. May

play a role in hair cell differentiation and follicle morphogenesis. TLE1, TLE2, TLE3 and TLE4 repress transactivation mediated by LEF1 and CTNNB1. Regulates T-cell receptor alpha enhancer function. Binds DNA in a sequence-specific manner. PIAG antagonizes both Wnt-dependent and Wnt-independent activation by LEF1 (By similarity).

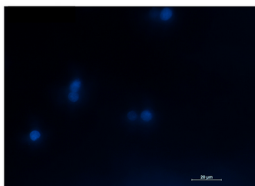
## Research Area

Epigenetics and Nuclear Signaling

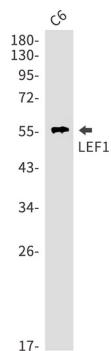
## Image Data



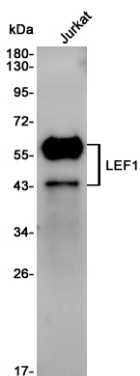
Immunocytochemistry analysis of LEF1 (green) in Jurkat using LEF1 antibody, and DAPI (blue).

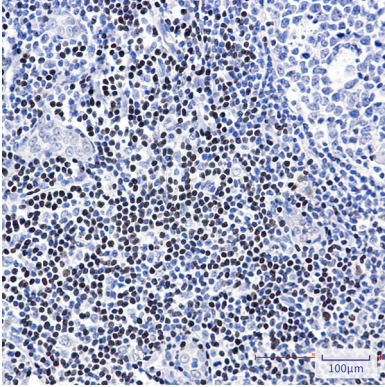


Western blot analysis of LEF1 in C6 lysates using LEF1 antibody.



Western blot analysis of LEF1 in Jurkat lysates using LEF1 antibody





Immunohistochemistry analysis of paraffin-embedded Human tonsil using LEF1 antibody. High-pressure and temperature Sodium Citrate pH 6.0 was used for antigen retrieval.