
Product Name: CDT1 Rabbit Polyclonal Antibody**Catalog #: APRab01393**

For research use only.

Summary

Description	Rabbit polyclonal Antibody
Host	Rabbit
Application	WB,ICC/IF,FC,IP
Reactivity	Human
Conjugation	Unconjugated
Modification	Unmodified
Isotype	IgG
Clonality	Polyclonal
Form	Liquid
Concentration	1mg/ml
Storage	Aliquot and store at -20°C (valid for 12 months). Avoid freeze/thaw cycles.
Shipping	Ice bags
Buffer	50mM Tris-Glycine(pH 7.4), 0.15M NaCl, 40% Glycerol, 0.01% Sodium azide and 0.05% protective protein
Purification	Affinity Purification

Application

Dilution Ratio	WB 1:500-1:1000,ICC/IF 1:50-1:200,FC 1:50-1:100,IP 1:20-1:50
Molecular Weight	Calculated MW: 60 kDa; Observed MW: 65 kDa

Antigen Information

Gene Name	CDT1
Alternative Names	CDT 1; Chromatin licensing and DNA replication factor 1; Retroviral integration site 2; RIS2
Gene ID	81620
SwissProt ID	Q9H211
Immunogen	Recombinant protein of human CDT1

Background

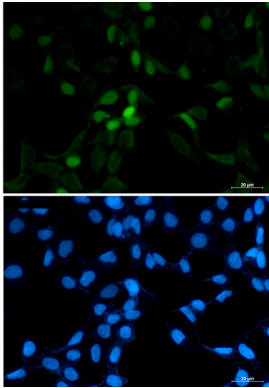
Cooperates with CDC6 to promote the loading of the mini-chromosome maintenance complex onto chromatin to form the pre-replication complex necessary to initiate DNA replication. Binds DNA in a sequence-, strand-, and conformation-

independent manner. Potential oncogene.

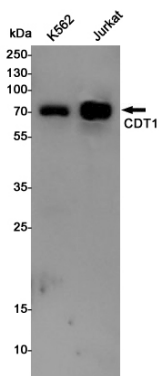
Research Area

Epigenetics and Nuclear Signaling

Image Data



Immunocytochemistry analysis of CDT1 (green) in 293T using CDT1 antibody, and DAPI (blue).



Western blot analysis of CDT1 in K562, Jurkat lysates using CDT1 antibody.