
Product Name: APG5L Rabbit Polyclonal Antibody**Catalog #: APRab01388**

For research use only.

Summary

Description	Rabbit polyclonal Antibody
Host	Rabbit
Application	WB,IHC,ICC/IF,FC
Reactivity	Human
Conjugation	Unconjugated
Modification	Unmodified
Isotype	IgG
Clonality	Polyclonal
Form	Liquid
Concentration	1mg/ml
Storage	Aliquot and store at -20°C (valid for 12 months). Avoid freeze/thaw cycles.
Shipping	Ice bags
Buffer	50mM Tris-Glycine(pH 7.4), 0.15M NaCl, 40% Glycerol, 0.01% Sodium azide and 0.05% protective protein
Purification	Affinity Purification

Application

Dilution Ratio	WB 1:500-1:1000,IHC 1:50-1:100,ICC/IF 1:50-1:200,FC 1:50-1:100
Molecular Weight	Calculated MW: 32 kDa; Observed MW: 55 kDa

Antigen Information

Gene Name	ATG5
Alternative Names	APG 5L; APG5; APG5 autophagy 5 like; APG5 like; APG5-like; Apoptosis specific protein; ASP; ATG 5; ATG5 autophagy related 5 homolog; Autophagy protein 5; hAPG5
Gene ID	9474
SwissProt ID	Q9H1Y0
Immunogen	A synthetic peptide of human APG5L/ATG5

Background

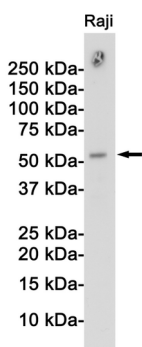
Required for autophagy. Conjugates to ATG12 and associates with isolation membrane to form cup-shaped isolation

membrane and autophagosome. Involved in mitochondrial quality control after oxidative damage, and in subsequent cellular longevity.

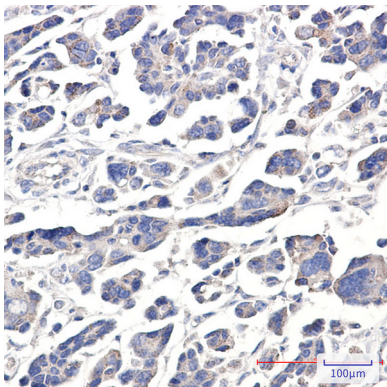
Research Area

Cell Biology

Image Data



Western blot analysis of Atg5/Apg5L in Raji lysates using APG5L antibody.



Immunohistochemistry analysis of paraffin-embedded Human Cholangiocarcinoma using APG5L/ATG5 antibody. High-pressure and temperature Sodium Citrate pH 6.0 was used for antigen retrieval.