

---

**Product Name: SQSTM1/p62 Rabbit Polyclonal Antibody****Catalog #: APRab01387**

For research use only.

**Summary**

<b>Description</b>	Rabbit polyclonal Antibody
<b>Host</b>	Rabbit
<b>Application</b>	WB,ICC/IF,FC
<b>Reactivity</b>	Human,Mouse
<b>Conjugation</b>	Unconjugated
<b>Modification</b>	Unmodified
<b>Isotype</b>	IgG
<b>Clonality</b>	Polyclonal
<b>Form</b>	Liquid
<b>Concentration</b>	1mg/ml
<b>Storage</b>	Aliquot and store at -20°C (valid for 12 months). Avoid freeze/thaw cycles.
<b>Shipping</b>	Ice bags
<b>Buffer</b>	50mM Tris-Glycine(pH 7.4), 0.15M NaCl, 40% Glycerol, 0.01% Sodium azide and 0.05% protective protein
<b>Purification</b>	Affinity Purification

**Application**

<b>Dilution Ratio</b>	WB 1:500-1:1000,ICC/IF 1:50-1:200,FC 1:50-1:100
<b>Molecular Weight</b>	Calculated MW: 48 kDa; Observed MW: 62 kDa

**Antigen Information**

<b>Gene Name</b>	SQSTM1
<b>Alternative Names</b>	p60; p62; A170; DMRV; OSIL; PDB3; ZIP3; p62B; NADGP; FTDALS3
<b>Gene ID</b>	8878
<b>SwissProt ID</b>	Q13501
<b>Immunogen</b>	Recombinant protein of human SQSTM1/p62

**Background**

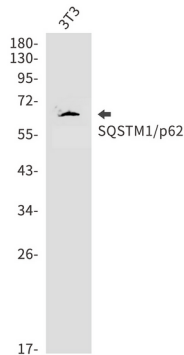
Autophagy receptor that interacts directly with both the cargo to become degraded and an autophagy modifier of the MAP1 LC3 family. Required both for the formation and autophagic degradation of polyubiquitin-containing bodies, called ALIS

(aggresome-like induced structures) and links ALIS to the autophagic machinery. Involved in midbody ring degradation. May regulate the activation of NFkB1 by TNF-alpha, nerve growth factor (NGF) and interleukin-1.

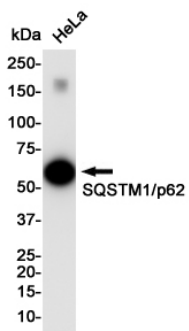
## Research Area

Signal Transduction

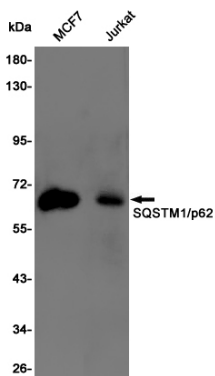
## Image Data



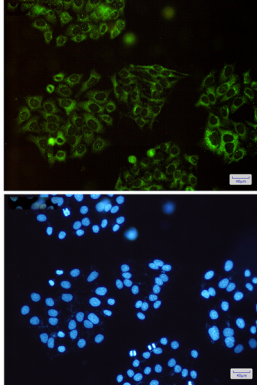
Western blot analysis of SQSTM1/p62 in 3T3 lysates using SQSTM1/p62 antibody.



Western blot analysis of SQSTM1/p62 in HeLa lysates using SQSTM1/p62 antibody.



Western blot analysis of SQSTM1/p62 in MCF-7, Jurkat lysates using SQSTM1/p62 antibody



Immunocytochemistry analysis of SQSTM1/p62(green) in HeLa using SQSTM1/p62 antibody, and DAPI(blue).