

Product Name: GRB2 Rabbit Polyclonal Antibody
Catalog #: APRab01386



Summary

Production Name	GRB2 Rabbit Polyclonal Antibody
Description	Rabbit Polyclonal Antibody
Host	Rabbit
Application	WB,IHC-P,IP
Reactivity	Human,Mouse,Rat

Performance

Conjugation	Unconjugated
Modification	Unmodified
Isotype	IgG
Clonality	Polyclonal
Form	Liquid
Storage	Store at 4°C short term. Aliquot and store at -20°C long term. Avoid freeze/thaw cycles.
Buffer	50mM Tris-Glycine(pH 7.4), 0.15M NaCl, 40% Glycerol, 0.01% Sodium azide and 0.05% protective protein
Purification	Affinity Purification

Immunogen

Gene Name	GRB2
Alternative Names	GRB2; ASH; Growth factor receptor-bound protein 2; Adapter protein GRB2; Protein Ash; SH2/SH3 adapter GRB2
Gene ID	2885
SwissProt ID	P62993.

Application

Dilution Ratio	WB: 1:500-1:1000 IHC: 1:50-1:100 IP: 1:20
Molecular Weight	Calculated MW: 25 kDa; Observed MW: 25 kDa

Product Name: GRB2 Rabbit Polyclonal Antibody
Catalog #: APRab01386



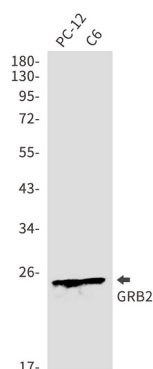
Background

Adapter protein that provides a critical link between cell surface growth factor receptors and the Ras signaling pathway.

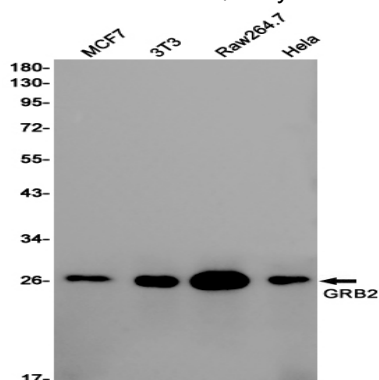
Research Area

Signal Transduction

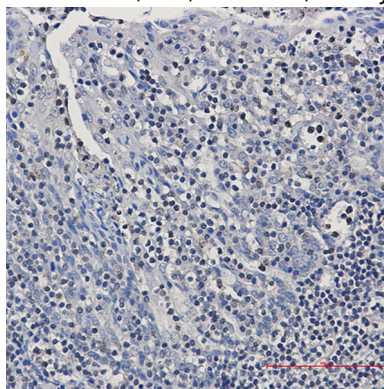
Image Data



Western blot analysis of GRB2 in PC-12, C6 lysates using GRB2 antibody.



Western blot analysis of GRB2 in MCF-7, 3T3, Raw264.7, HeLa lysates using GRB2 antibody.



Immunohistochemistry analysis of paraffin-embedded Human tonsil using GRB2 antibody. High-pressure and temperature Sodium Citrate pH 6.0 was used for antigen retrieval.

Product Name: GRB2 Rabbit Polyclonal Antibody
Catalog #: APRab01386



Note

For research use only.