
Product Name: Integrin beta 1 Rabbit Polyclonal Antibody**Catalog #: APRab01383**

For research use only.

Summary

Description	Rabbit polyclonal Antibody
Host	Rabbit
Application	WB,IHC,FC
Reactivity	Human
Conjugation	Unconjugated
Modification	Unmodified
Isotype	IgG
Clonality	Polyclonal
Form	Liquid
Concentration	1mg/ml
Storage	Aliquot and store at -20°C (valid for 12 months). Avoid freeze/thaw cycles.
Shipping	Ice bags
Buffer	50mM Tris-Glycine(pH 7.4), 0.15M NaCl, 40% Glycerol, 0.01% Sodium azide and 0.05% protective protein
Purification	Affinity Purification

Application

Dilution Ratio	WB 1:500-1:1000,IHC 1:50-1:100,FC 1:50-1:100
Molecular Weight	Calculated MW: 88 kDa; Observed MW: 120-160 kDa

Antigen Information

Gene Name	ITGB1
Alternative Names	ITGB1; FNRB; MDF2; MSK12; Integrin beta-1; Fibronectin receptor subunit beta; VLA-4 subunit beta; CD antigen CD29
Gene ID	3688
SwissProt ID	P05556
Immunogen	A synthetic peptide of human Integrin beta 1

Background

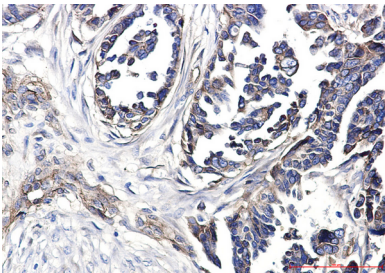
Integrins are α/β heterodimeric cell surface receptors that play a pivotal role in cell adhesion and migration, as well as in growth

and survival. The integrin family contains at least 18 α and 8 β subunits that form 24 known integrins with distinct tissue distribution and overlapping ligand specificities.

Research Area

Neuroscience

Image Data



Immunohistochemistry analysis of paraffin-embedded Human Cholangiocarcinoma using Integrin beta 1 antibody. High-pressure and temperature Sodium Citrate pH 6.0 was used for antigen retrieval.