
Product Name: NSE Rabbit Polyclonal Antibody**Catalog #: APRab01379**

For research use only.

Summary

Description	Rabbit polyclonal Antibody
Host	Rabbit
Application	WB,IHC,ICC/IF,FC
Reactivity	Human,Mouse,Rat
Conjugation	Unconjugated
Modification	Unmodified
Isotype	IgG
Clonality	Polyclonal
Form	Liquid
Concentration	1mg/ml
Storage	Aliquot and store at -20°C (valid for 12 months). Avoid freeze/thaw cycles.
Shipping	Ice bags
Buffer	50mM Tris-Glycine(pH 7.4), 0.15M NaCl, 40% Glycerol, 0.01% Sodium azide and 0.05% protective protein
Purification	Affinity Purification

Application

Dilution Ratio	WB 1:500-1:1000,IHC 1:50-1:100,ICC/IF 1:50-1:200,FC 1:50-1:100
Molecular Weight	Calculated MW: 47 kDa; Observed MW: 47 kDa

Antigen Information

Gene Name	ENO2
Alternative Names	ENO2; Gamma-enolase; 2-phospho-D-glycerate hydro-lyase; Enolase 2; Neural enolase; Neuron-specific enolase; NSE
Gene ID	2026
SwissProt ID	P09104
Immunogen	Recombinant protein of human NSE

Background

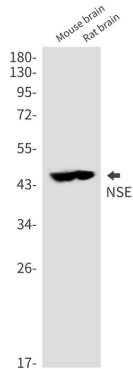
ENO2 an enzyme with 2-phospho-D-glycerate hydro-lyase activity. One of the three enolase isoenzymes found in mammals.

This isoenzyme, a homodimer, is found in mature neurons and cells of neuronal origin. A switch from alpha enolase to gamma enolase occurs in neural tissue during development in rats and primates.

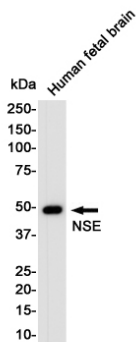
Research Area

Signal Transduction

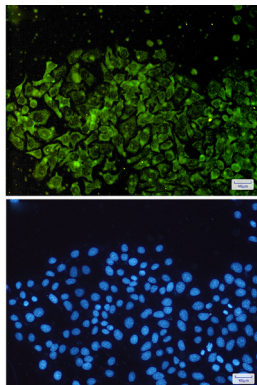
Image Data



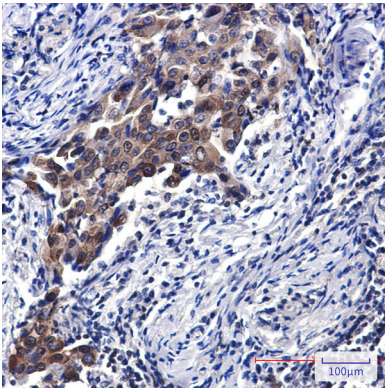
Western blot analysis of NSE in mouse brain, rat brain lysates using NSE antibody.



Western blot analysis of Enolase2/NSE in Human Fetal Brain lysates using Enolase2/NSE antibody.



Immunocytochemistry analysis of NSE(green) in HeLa using NSE antibody, and DAPI(blue)



Immunohistochemistry analysis of paraffin-embedded Human lung cancer using NSE antibody. High-pressure and temperature Sodium Citrate pH 6.0 was used for antigen retrieval.