
Product Name: Glutaminase Rabbit Polyclonal Antibody**Catalog #: APRab01376**

For research use only.

Summary

Description	Rabbit polyclonal Antibody
Host	Rabbit
Application	WB,IHC,ICC/IF,FC
Reactivity	Human
Conjugation	Unconjugated
Modification	Unmodified
Isotype	IgG
Clonality	Polyclonal
Form	Liquid
Concentration	1mg/ml
Storage	Aliquot and store at -20°C (valid for 12 months). Avoid freeze/thaw cycles.
Shipping	Ice bags
Buffer	50mM Tris-Glycine(pH 7.4), 0.15M NaCl, 40% Glycerol, 0.01% Sodium azide and 0.05% protective protein
Purification	Affinity Purification

Application

Dilution Ratio	WB 1:500-1:1000,IHC 1:50-1:100,ICC/IF 1:50-1:200,FC 1:50-1:100
Molecular Weight	Calculated MW: 73 kDa; Observed MW: 73,65 kDa

Antigen Information

Gene Name	GLS
Alternative Names	Glutaminase kidney isoform; GLS; GLS1; KGA; K-glutaminase; GAM; GAC; Glutaminase C; L-glutamine amidohydrolase
Gene ID	2744
SwissProt ID	O94925
Immunogen	A synthetic peptide of human Glutaminase

Background

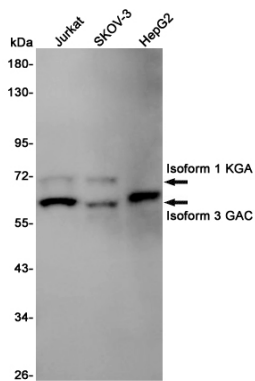
Catalyzes the first reaction in the primary pathway for the renal catabolism of glutamine. Plays a role in maintaining acid-base

homeostasis. Regulates the levels of the neurotransmitter glutamate in the brain. Isoform 2 lacks catalytic activity. Isoform 1 and isoform 3 are activated by phosphate. Inhibited by BPTES. BPTES binds between subunits and favors dissociation of the tetramer into dimers.

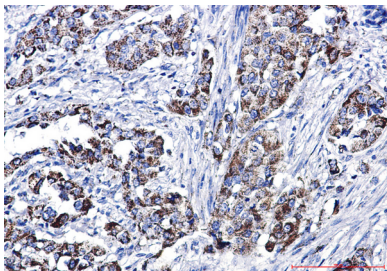
Research Area

Neuroscience

Image Data



Western blot analysis of Glutaminase1/GLS1 in Jurkat, SKOV-3, HepG2 lysates using Glutaminase antibody.



Immunohistochemistry analysis of paraffin-embedded Human lung cancer using Glutaminase antibody. High-pressure and temperature Sodium Citrate pH 6.0 was used for antigen retrieval.