

Product Name: SENP1 Rabbit Polyclonal Antibody**Catalog #: APRab01373**

For research use only.

Summary

Description	Rabbit polyclonal Antibody
Host	Rabbit
Application	WB,IHC,ICC/IF,FC
Reactivity	Human
Conjugation	Unconjugated
Modification	Unmodified
Isotype	IgG
Clonality	Polyclonal
Form	Liquid
Concentration	1mg/ml
Storage	Aliquot and store at -20°C (valid for 12 months). Avoid freeze/thaw cycles.
Shipping	Ice bags
Buffer	50mM Tris-Glycine(pH 7.4), 0.15M NaCl, 40% Glycerol, 0.01% Sodium azide and 0.05% protective protein
Purification	Affinity Purification

Application

Dilution Ratio	WB 1:500-1:1000,IHC 1:50-1:100,ICC/IF 1:50-1:200,FC 1:50-1:100
Molecular Weight	Calculated MW: 73 kDa; Observed MW: 76 kDa

Antigen Information

Gene Name	SENP1
Alternative Names	SENP1; SuPr2
Gene ID	29843
SwissProt ID	Q9P0U3
Immunogen	A synthetic peptide of human SENP1

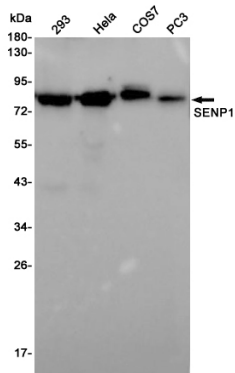
Background

Protease that catalyzes two essential functions in the SUMO pathway: processing of full-length SUMO1, SUMO2 and SUMO3 to their mature forms and deconjugation of SUMO1, SUMO2 and SUMO3 from targeted proteins.

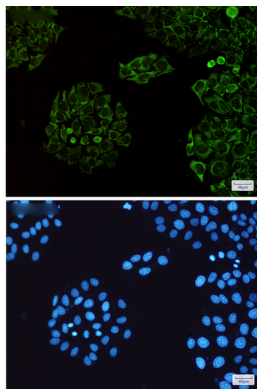
Research Area

Cell Biology

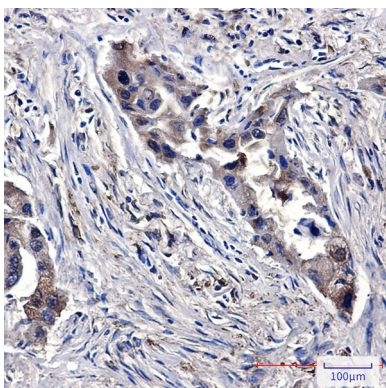
Image Data



Western blot analysis of SENP1 in 293, HeLa, COS7, PC-3 lysates using SENP1 antibody.



Immunocytochemistry analysis of SENP1(green) in HeLa using SENP1 antibody, and DAPI(blue)



Immunohistochemistry analysis of paraffin-embedded Human lung cancer using SENP1 antibody. High-pressure and temperature Sodium Citrate pH 6.0 was used for antigen retrieval.