

Product Name: RhoA/B/C Rabbit Polyclonal Antibody**Catalog #: APRab01372**

For research use only.

Summary

Description	Rabbit polyclonal Antibody
Host	Rabbit
Application	WB,IHC,ICC/IF,FC
Reactivity	Human
Conjugation	Unconjugated
Modification	Unmodified
Isotype	IgG
Clonality	Polyclonal
Form	Liquid
Concentration	1mg/ml
Storage	Aliquot and store at -20°C (valid for 12 months). Avoid freeze/thaw cycles.
Shipping	Ice bags
Buffer	50mM Tris-Glycine(pH 7.4), 0.15M NaCl, 40% Glycerol, 0.01% Sodium azide and 0.05% protective protein
Purification	Affinity Purification

Application

Dilution Ratio	WB 1:500-1:1000,IHC 1:50-1:100,ICC/IF 1:50-1:200,FC 1:50-1:100
Molecular Weight	Calculated MW: 22 kDa; Observed MW: 22 kDa

Antigen Information

Gene Name	RHOA/RHOB/RHOC
Alternative Names	ARH12; ARH6; ARH9; ARHA; ARHA2; H12; RHO12; Transforming protein RhoA; RHOA; RHOB; RHOC
Gene ID	387/388/389
SwissProt ID	P61586/P62745/P08134
Immunogen	

Background

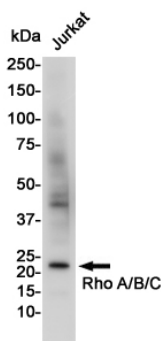
RhoA,RhoB,RhoC is a small G protein of the Rho family. Regulates a signal transduction pathway linking plasma membrane

receptors to the assembly of focal adhesions and actin stress fibers. The three mammalian Rho proteins (A, B and C) are approximately 30% homologous to Ras and are expressed in a wide range of cell types. Both Ras p21 and Rho p21, as well as other members of the Ras superfamily, contain a carboxy terminal CAAX sequence (C, cysteine; A, aliphatic amino acid; X, any amino acid) which in the case of Ras has been shown to be essential for correct localization and function.

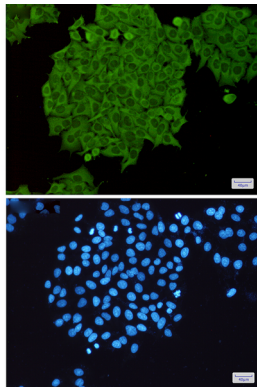
Research Area

Signal Transduction

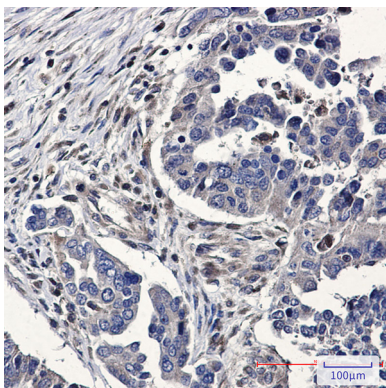
Image Data



Western blot analysis of RhoA/B/C in Jurkat lysates using RhoA/B/C antibody.



Immunocytochemistry analysis of Rho A/B/C(green) in HeLa using Rho A/B/C antibody, and DAPI(blue)



Immunohistochemistry analysis of paraffin-embedded Human Cholangiocarcinoma using RhoA/B/C antibody. High-pressure and temperature Sodium Citrate pH 6.0 was used for antigen retrieval.