

Product Name: PSMD14 Rabbit Polyclonal Antibody**Catalog #: APRab01370**

For research use only.

Summary

Description	Rabbit polyclonal Antibody
Host	Rabbit
Application	WB,IHC,ICC/IF
Reactivity	Human,Mouse,Rat,Monkey
Conjugation	Unconjugated
Modification	Unmodified
Isotype	IgG
Clonality	Polyclonal
Form	Liquid
Concentration	1mg/ml
Storage	Aliquot and store at -20°C (valid for 12 months). Avoid freeze/thaw cycles.
Shipping	Ice bags
Buffer	50mM Tris-Glycine(pH 7.4), 0.15M NaCl, 40% Glycerol, 0.01% Sodium azide and 0.05% protective protein
Purification	Affinity Purification

Application

Dilution Ratio	WB 1:500-1:1000,IHC 1:50-1:100,ICC/IF 1:50-1:200
Molecular Weight	Calculated MW: 35 kDa; Observed MW: 35 kDa

Antigen Information

Gene Name	PSMD14
Alternative Names	26S proteasome non-ATPase regulatory subunit 14; PAD1; POH1; Psmd14; RPN11
Gene ID	10213
SwissProt ID	O00487
Immunogen	A synthetic peptide of human PSMD14

Background

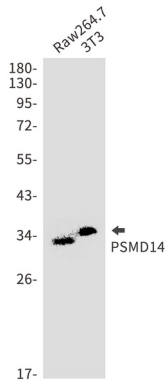
Metalloprotease component of the 26S proteasome that specifically cleaves 'Lys-63'-linked polyubiquitin chains. The 26S proteasome is involved in the ATP-dependent degradation of ubiquitinated proteins. The function of the 'Lys-63'-specific

deubiquitination of the proteasome is unclear.

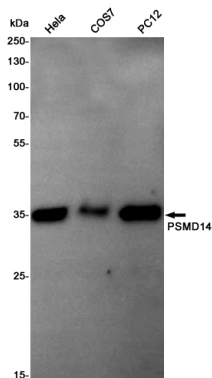
Research Area

Cell Biology

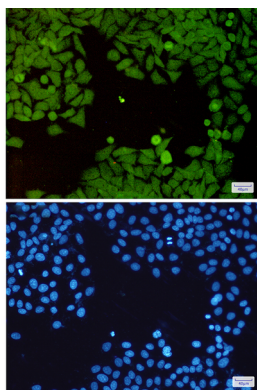
Image Data



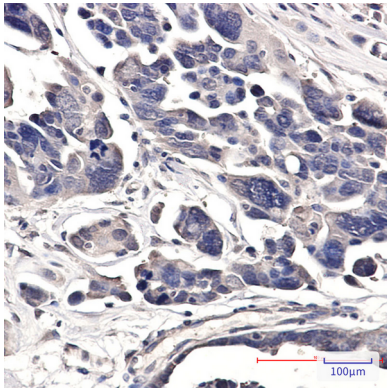
Western blot analysis of PSMD14 in Raw264.7, 3T3 lysates using PSMD14 antibody.



Western blot analysis of PSMD14 in HeLa, COS7, PC-12 lysates using PSMD14 antibody.



Immunocytochemistry analysis of PSMD14(green) in HeLa using PSMD14 antibody, and DAPI(blue)



Immunohistochemistry analysis of paraffin-embedded Human Cholangiocarcinoma using PSMD14 antibody. High-pressure and temperature Sodium Citrate pH 6.0 was used for antigen retrieval.