

Product Name: GDF15 Rabbit Polyclonal Antibody
Catalog #: APRab01365



Summary

Production Name	GDF15 Rabbit Polyclonal Antibody
Description	Rabbit Polyclonal Antibody
Host	Rabbit
Application	WB,IP
Reactivity	Human

Performance

Conjugation	Unconjugated
Modification	Unmodified
Isotype	IgG
Clonality	Polyclonal
Form	Liquid
Storage	Store at 4°C short term. Aliquot and store at -20°C long term. Avoid freeze/thaw cycles.
Buffer	50mM Tris-Glycine(pH 7.4), 0.15M NaCl, 40% Glycerol, 0.01% Sodium azide and 0.05% protective protein
Purification	Affinity Purification

Immunogen

Gene Name	GDF15
Alternative Names	GDF15; MIC1; PDF; PLAB; PTGFB; Growth/differentiation factor 15; GDF-15; Macrophage inhibitory cytokine 1; MIC-1; NSAID-activated gene 1 protein; NAG-1; NSAID-regulated gene 1 protein; NRG-1; Placental TGF-beta; Placental bone morphogenetic
Gene ID	9518
SwissProt ID	Q99988.

Application

Dilution Ratio	WB: 1:500-1:1000 IP: 1:20
Molecular Weight	Calculated MW: 34 kDa; Observed MW: 35,13 kDa

Product Name: GDF15 Rabbit Polyclonal Antibody
Catalog #: APRab01365



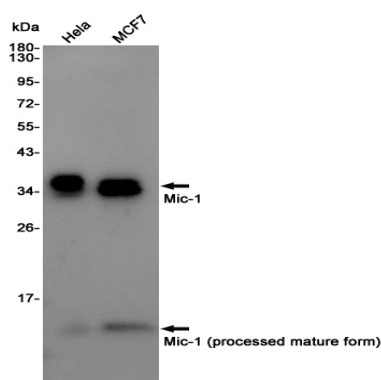
Background

Highly expressed in placenta, with lower levels in prostate and colon and some expression in kidney.

Research Area

Cell Biology

Image Data



Western blot analysis of GDF15/Mic1 in HeLa, MCF-7 lysates using GDF15 antibody.

Note

For research use only.