
Product Name: Stathmin 1 Rabbit Polyclonal Antibody**Catalog #: APRab01364**

For research use only.

Summary

Description	Rabbit polyclonal Antibody
Host	Rabbit
Application	WB,IHC,FC,IP
Reactivity	Human,Rat
Conjugation	Unconjugated
Modification	Unmodified
Isotype	IgG
Clonality	Polyclonal
Form	Liquid
Concentration	1mg/ml
Storage	Aliquot and store at -20°C (valid for 12 months). Avoid freeze/thaw cycles.
Shipping	Ice bags
Buffer	50mM Tris-Glycine(pH 7.4), 0.15M NaCl, 40% Glycerol, 0.01% Sodium azide and 0.05% protective protein
Purification	Affinity Purification

Application

Dilution Ratio	WB 1:500-1:1000,IHC 1:50-1:100,FC 1:50-1:100,IP 1:20-1:50
Molecular Weight	Calculated MW: 17 kDa; Observed MW: 17 kDa

Antigen Information

Gene Name	STMN1
Alternative Names	STMN1; C1orf215; LAP18; OP18; Stathmin; Leukemia-associated phosphoprotein p18; Metablastin; Oncoprotein 18; Op18; Phosphoprotein p19; pp19; ProsoLin; Protein Pr22; pp17
Gene ID	3925
SwissProt ID	P16949
Immunogen	A synthetic peptide corresponding to target protein

Background

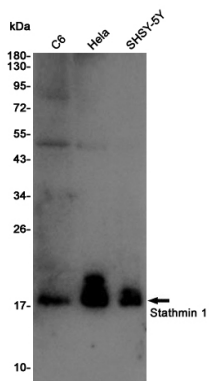
Involved in the regulation of the microtubule (MT) filament system by destabilizing microtubules. Prevents assembly and

promotes disassembly of microtubules. Phosphorylation at Ser-16 may be required for axon formation during neurogenesis. Involved in the control of the learned and innate fear.

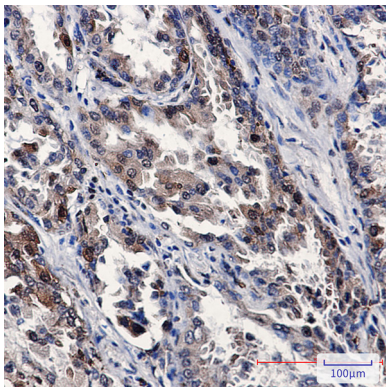
Research Area

Neuroscience

Image Data



Western blot analysis of Stathmin 1 in C6, HeLa, SH-SY5Y lysates using Stathmin 1 antibody.



Immunohistochemistry analysis of paraffin-embedded Human lung cancer using Stathmin 1 antibody. High-pressure and temperature Sodium Citrate pH 6.0 was used for antigen retrieval.