
Product Name: p21 Rabbit Polyclonal Antibody**Catalog #: APRab01362**

For research use only.

Summary

Description	Rabbit polyclonal Antibody
Host	Rabbit
Application	WB,IHC,FC,IP
Reactivity	Human
Conjugation	Unconjugated
Modification	Unmodified
Isotype	IgG
Clonality	Polyclonal
Form	Liquid
Concentration	1mg/ml
Storage	Aliquot and store at -20°C (valid for 12 months). Avoid freeze/thaw cycles.
Shipping	Ice bags
Buffer	50mM Tris-Glycine(pH 7.4), 0.15M NaCl, 40% Glycerol, 0.01% Sodium azide and 0.05% protective protein
Purification	Affinity Purification

Application

Dilution Ratio	WB 1:500-1:1000,IHC 1:50-1:100,FC 1:50-1:100,IP 1:20-1:50
Molecular Weight	Calculated MW: 18 kDa; Observed MW: 21 kDa

Antigen Information

Gene Name	CDKN1A
Alternative Names	CDKN1A; CAP20; CDKN1; CIP1; MDA6; PIC1; SDI1; WAF1; Cyclin-dependent kinase inhibitor 1; CDK-interacting protein 1; Melanoma differentiation-associated protein 6; MDA-6; p21
Gene ID	1026
SwissProt ID	P38936
Immunogen	A synthetic peptide of human p21

Background

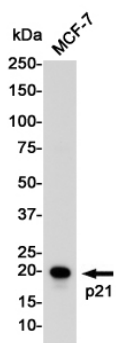
The tumor suppressor protein p21 Waf1/Cip1 acts as an inhibitor of cell cycle progression. It functions in stoichiometric

relationships forming heterotrimeric complexes with cyclins and cyclin-dependent kinases. In association with CDK2 complexes, it serves to inhibit kinase activity and block progression through G1/S. However, p21 may also enhance assembly and activity in complexes of CDK4 or CDK6 and cyclin D.

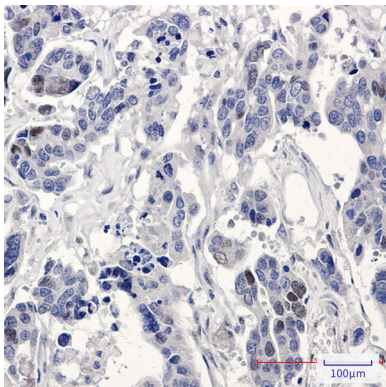
Research Area

Cell Biology

Image Data



Western blot analysis of p21 Waf1/Cip1 in MCF-7 lysates using p21 antibody.



Immunohistochemistry analysis of paraffin-embedded Human Cholangiocarcinoma using p21 antibody. High-pressure and temperature Sodium Citrate pH 6.0 was used for antigen retrieval.