
Product Name: Estrogen Receptor alpha Rabbit Polyclonal Antibody**Catalog #: APRab01358**

For research use only.

Summary

Description	Rabbit polyclonal Antibody
Host	Rabbit
Application	WB,IHC,FC,IP,ChIP
Reactivity	Human
Conjugation	Unconjugated
Modification	Unmodified
Isotype	IgG
Clonality	Polyclonal
Form	Liquid
Concentration	1mg/ml
Storage	Aliquot and store at -20°C (valid for 12 months). Avoid freeze/thaw cycles.
Shipping	Ice bags
Buffer	50mM Tris-Glycine(pH 7.4), 0.15M NaCl, 40% Glycerol, 0.01% Sodium azide and 0.05% protective protein
Purification	Affinity Purification

Application

Dilution Ratio	WB 1:500-1:1000,IHC 1:50-1:100,FC 1:50-1:100,IP 1:20-1:50,ChIP 1:20
Molecular Weight	Calculated MW: 66 kDa; Observed MW: 66 kDa

Antigen Information

Gene Name	ESR1
Alternative Names	ESR1; Era; Eralpha; Estrogen receptor; Estradiol receptor; ER-alpha; Estrogen receptor 1; NR3A1; ER; ESR; ESRA; Estrogen receptor alpha
Gene ID	2099
SwissProt ID	P03372
Immunogen	A synthetic peptide corresponding to target protein

Background

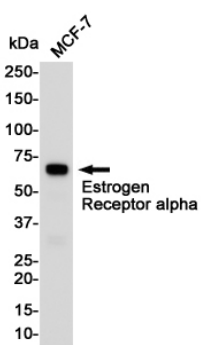
ER (estrogen receptor 1) a member of the steroid receptor superfamily, contains highly conserved DNA binding (DBD) and

ligand binding domains (LBD). Through its estrogen-independent and estrogen-dependent activation domains (AF-1 and AF-2, respectively), ER regulates transcription by recruiting coactivator proteins and interacting with general transcriptional machinery. Phosphorylation provides an important mechanism to regulate ER activity. ER is phosphorylated on multiple sites.

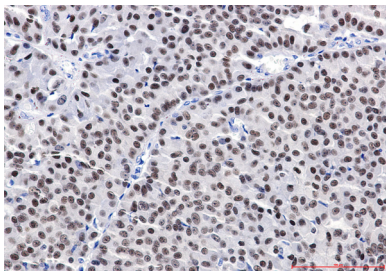
Research Area

Signal Transduction

Image Data



Western blot analysis of Estrogen Receptor α in MCF-7 lysates using Estrogen Receptor alpha antibody.



Immunohistochemistry analysis of paraffin-embedded Human breast cancer using Estrogen Receptor alpha antibody. High-pressure and temperature Sodium Citrate pH 6.0 was used for antigen retrieval.