
Product Name: TOMM20 Rabbit Polyclonal Antibody**Catalog #: APRab01355**

For research use only.

Summary

Description	Rabbit polyclonal Antibody
Host	Rabbit
Application	WB,IHC,ICC/IF,FC
Reactivity	Human,Mouse
Conjugation	Unconjugated
Modification	Unmodified
Isotype	IgG
Clonality	Polyclonal
Form	Liquid
Concentration	1mg/ml
Storage	Aliquot and store at -20°C (valid for 12 months). Avoid freeze/thaw cycles.
Shipping	Ice bags
Buffer	50mM Tris-Glycine(pH 7.4), 0.15M NaCl, 40% Glycerol, 0.01% Sodium azide and 0.05% protective protein
Purification	Affinity Purification

Application

Dilution Ratio	WB 1:500-1:1000,IHC 1:50-1:100,ICC/IF 1:50-1:200,FC 1:50-1:100
Molecular Weight	Calculated MW: 16 kDa; Observed MW: 16 kDa

Antigen Information

Gene Name	TOMM20 TOMM20; KIAA0016; Mitochondrial import receptor subunit TOM20 homolog;
Alternative Names	Mitochondrial 20 kDa outer membrane protein; Outer mitochondrial membrane receptor Tom20
Gene ID	9804
SwissProt ID	Q15388
Immunogen	Recombinant protein of human TOMM20

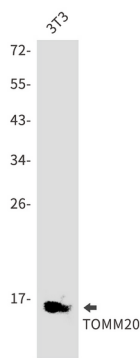
Background

Central component of the receptor complex responsible for the recognition and translocation of cytosolically synthesized mitochondrial preproteins. Together with TOM22 functions as the transit peptide receptor at the surface of the mitochondrion outer membrane and facilitates the movement of preproteins into the TOM40 translocation pore.

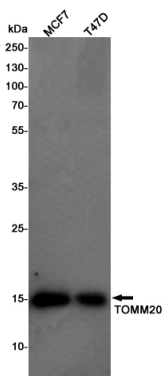
Research Area

Signal Transduction

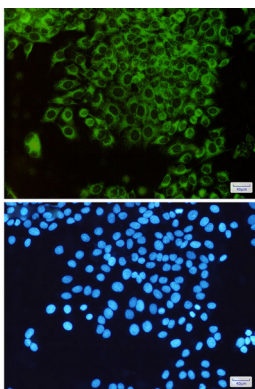
Image Data



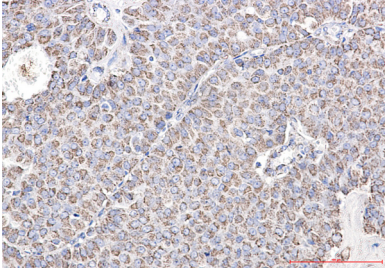
Western blot analysis of TOMM20 in 3T3 lysates using TOMM20 antibody.



Western blot analysis of TOMM20 in MCF-7, T47D lysates using TOMM20 antibody.



Immunocytochemistry analysis of TOMM20(green) in HeLa using TOMM20 antibody, and DAPI(blue)



Immunohistochemistry analysis of paraffin-embedded Human breast cancer using TOMM20 antibody. High-pressure and temperature Sodium Citrate pH 6.0 was used for antigen retrieval.