
Product Name: Nrf1 Rabbit Polyclonal Antibody**Catalog #: APRab01352**

For research use only.

Summary

Description	Rabbit polyclonal Antibody
Host	Rabbit
Application	WB,IHC,ICC/IF,FC,IP
Reactivity	Human,Mouse,Rat
Conjugation	Unconjugated
Modification	Unmodified
Isotype	IgG
Clonality	Polyclonal
Form	Liquid
Concentration	1mg/ml
Storage	Aliquot and store at -20°C (valid for 12 months). Avoid freeze/thaw cycles.
Shipping	Ice bags
Buffer	Rabbit IgG in phosphate buffered saline , pH 7.4, 150mM NaCl, 0.02% sodium azide and 50% glycerol.
Purification	Affinity Chromatography

Application

Dilution Ratio	WB 1:500-1:1000,IHC 1:50-1:100,ICC/IF 1:50-1:200,FC 1:50-1:100,IP 1:20-1:50
Molecular Weight	Calculated MW: 54 kDa; Observed MW: 68 kDa

Antigen Information

Gene Name	NRF1 alpha pal; alpha palindromic binding protein; Alpha palindromic-binding protein; Alpha-pal;
Alternative Names	locus control region factor 1; NFE2 related factor 1; NRF-1; Nrf1; NRF1_HUMAN; Nuclear respiratory factor 1; transcription factor 11.
Gene ID	4899
SwissProt ID	Q16656
Immunogen	A synthetic peptide of human NRF1

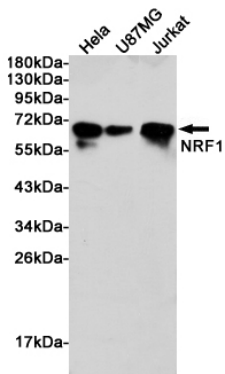
Background

Transcription factor that activates the expression of the EIF2S1 (EIF2-alpha) gene. Links the transcriptional modulation of key metabolic genes to cellular growth and development. Implicated in the control of nuclear genes required for respiration, heme biosynthesis, and mitochondrial DNA transcription and replication.

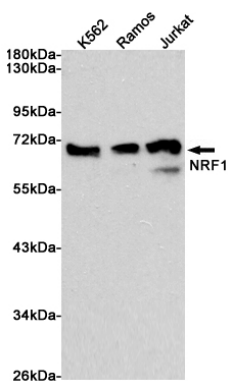
Research Area

Epigenetics and Nuclear Signaling

Image Data



Western blot analysis of Nrf1 in HeLa, U87-MG and Jurkat lysates using Nrf1 antibody.



Western blot analysis of Nrf1 in K562, Ramos and Jurkat lysates using NRF1 antibody.