

---

**Product Name: MSR1 Rabbit Polyclonal Antibody****Catalog #: APRab01349**

For research use only.

**Summary**

<b>Description</b>	Rabbit polyclonal Antibody
<b>Host</b>	Rabbit
<b>Application</b>	WB
<b>Reactivity</b>	Human, Mouse, Rat
<b>Conjugation</b>	Unconjugated
<b>Modification</b>	Unmodified
<b>Isotype</b>	IgG
<b>Clonality</b>	Polyclonal
<b>Form</b>	Liquid
<b>Concentration</b>	1mg/ml
<b>Storage</b>	Aliquot and store at -20°C (valid for 12 months). Avoid freeze/thaw cycles.
<b>Shipping</b>	Ice bags
<b>Buffer</b>	Rabbit IgG in phosphate buffered saline , pH 7.4, 150mM NaCl, 0.02% sodium azide and 50% glycerol.
<b>Purification</b>	Affinity Chromatography

**Application**

<b>Dilution Ratio</b>	WB 1:500-1:1000
<b>Molecular Weight</b>	Calculated MW: 50 kDa; Observed MW: 75 kDa

**Antigen Information**

<b>Gene Name</b>	MSR1
<b>Alternative Names</b>	Macrophage scavenger receptor types I and II; Macrophage acetylated LDL receptor I and II; Scavenger receptor class A member 1; CD204; MSR1; SCARA1
<b>Gene ID</b>	4481
<b>SwissProt ID</b>	P21757
<b>Immunogen</b>	A synthetic peptide of human CD204

**Background**

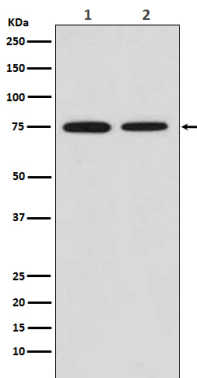
Membrane glycoproteins implicated in the pathologic deposition of cholesterol in arterial walls during atherogenesis. Two

types of receptor subunits exist. These receptors mediate the endocytosis of a diverse group of macromolecules, including modified low density lipoproteins (LDL). Isoform III does not internalize acetylated LDL.

## Research Area

Immunology

## Image Data



Western blot analysis of MSR1 in (1) HeLa lysates; (2) mouse placenta lysates using MSR1 antibody.