
Product Name: Human IgM Rabbit Polyclonal Antibody**Catalog #: APRab01340**

For research use only.

Summary

Description	Rabbit polyclonal Antibody
Host	Rabbit
Application	WB,IHC,IP
Reactivity	Human
Conjugation	Unconjugated
Modification	Unmodified
Isotype	IgG
Clonality	Polyclonal
Form	Liquid
Concentration	1mg/ml
Storage	Aliquot and store at -20°C (valid for 12 months). Avoid freeze/thaw cycles.
Shipping	Ice bags
Buffer	Rabbit IgG in phosphate buffered saline , pH 7.4, 150mM NaCl, 0.02% sodium azide and 50% glycerol.
Purification	Affinity Chromatography

Application

Dilution Ratio	WB 1:500-1:1000,IHC 1:50-1:100,IP 1:20-1:50
Molecular Weight	Calculated MW: 49 kDa; Observed MW: 75 kDa

Antigen Information

Gene Name	IGHM
Alternative Names	Ig mu chain C region
Gene ID	3507.0
SwissProt ID	P01871
Immunogen	Recombinant protein of human IgM

Background

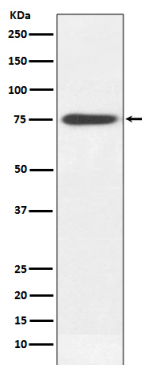
IgM measurement yields information about the body's immediate resistance and response to infection as well as information related to specific diseases. Decreased levels are associated with immune deficiency states, hereditary deficiencies, and

myeloma. Increased levels can be associated with Waldenstrom's macroglobulinemia, chronic infection and hepatocellular disease.

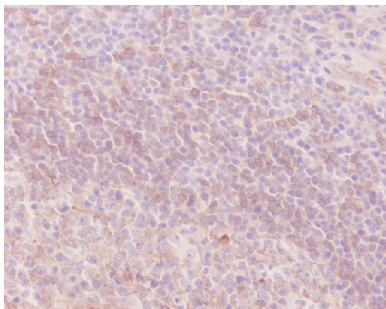
Research Area

Immunology

Image Data



Western blot analysis of Human IgM in Human plasma lysates using Human IgM antibody.



Immunohistochemistry analysis of paraffin-embedded Human tonsil using Human IgM antibody. High-pressure and temperature Sodium Citrate pH 6.0 was used for antigen retrieval.